

GALE PRIMARY SOURCES

# 上海租界関連 ARCHIVES UNBOUND

2022年1月26日

センゲージラーニング株式会社  
Gale部門 森澤 正樹

# 会社紹介

## GALE

- 米国の教育出版社センゲージ ラーニングの図書館部門
- 本部: 米国ミシガン州ファーミントン・ヒルズ市
- 出版形態
  - ✓ 百科事典・年鑑などのレファレンス書籍
  - ✓ 電子ブック・文学情報・雑誌記事などのデータベース
  - ✓ 一次資料・新聞などのマイクロフォーム
  - ✓ 一次資料・新聞などのデジタル・アーカイブ **Gale Primary Sources**



# 本日のアジェンダ

- アーカイブズ・アンバウンド Archives Unbound について
- 上海共同租界について
- 上海関連コレクションのご案内
- デモンストレーション
- 関連資料のご案内



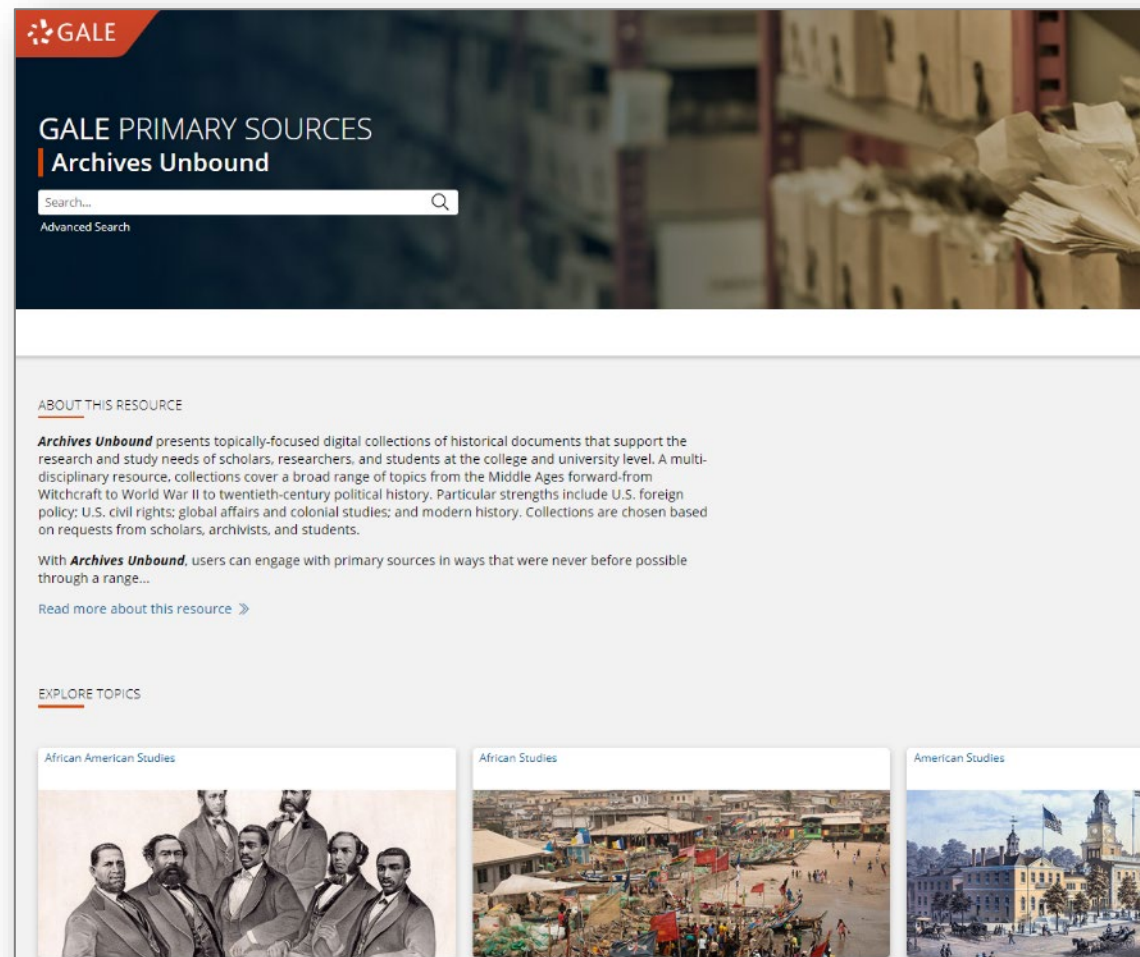
Thorbecke, Ellen. *Shanghai Photographed & Depicted*. North-China Daily News & Herald Ltd., n.d. *Archives Unbound*, [link.gale.com/apps/doc/XJCOYP414395243/GDSC?u=asiademo&sid=bookmark-GDSC&xid=332fa9cf&pg=50](https://link.gale.com/apps/doc/XJCOYP414395243/GDSC?u=asiademo&sid=bookmark-GDSC&xid=332fa9cf&pg=50).



# アーカイブズ・アンバウンド Archives Unbound について

## 中小規模コレクションのデジタル化プログラム

- 米英の公文書館、政府機関、大学図書館などの所蔵資料より、専門性の高い中小規模の特別コレクション380以上をデジタル化し、個別に提供するプログラム
- コレクションは1点ごとに購入可能、維持費等はなし
- 毎年20～30点の新しいコレクションを追加
- OCRによる全文検索、著者・タイトル・文書番号による検索機能
- Gale Primary Sources の大型コレクションとの横断検索も可能

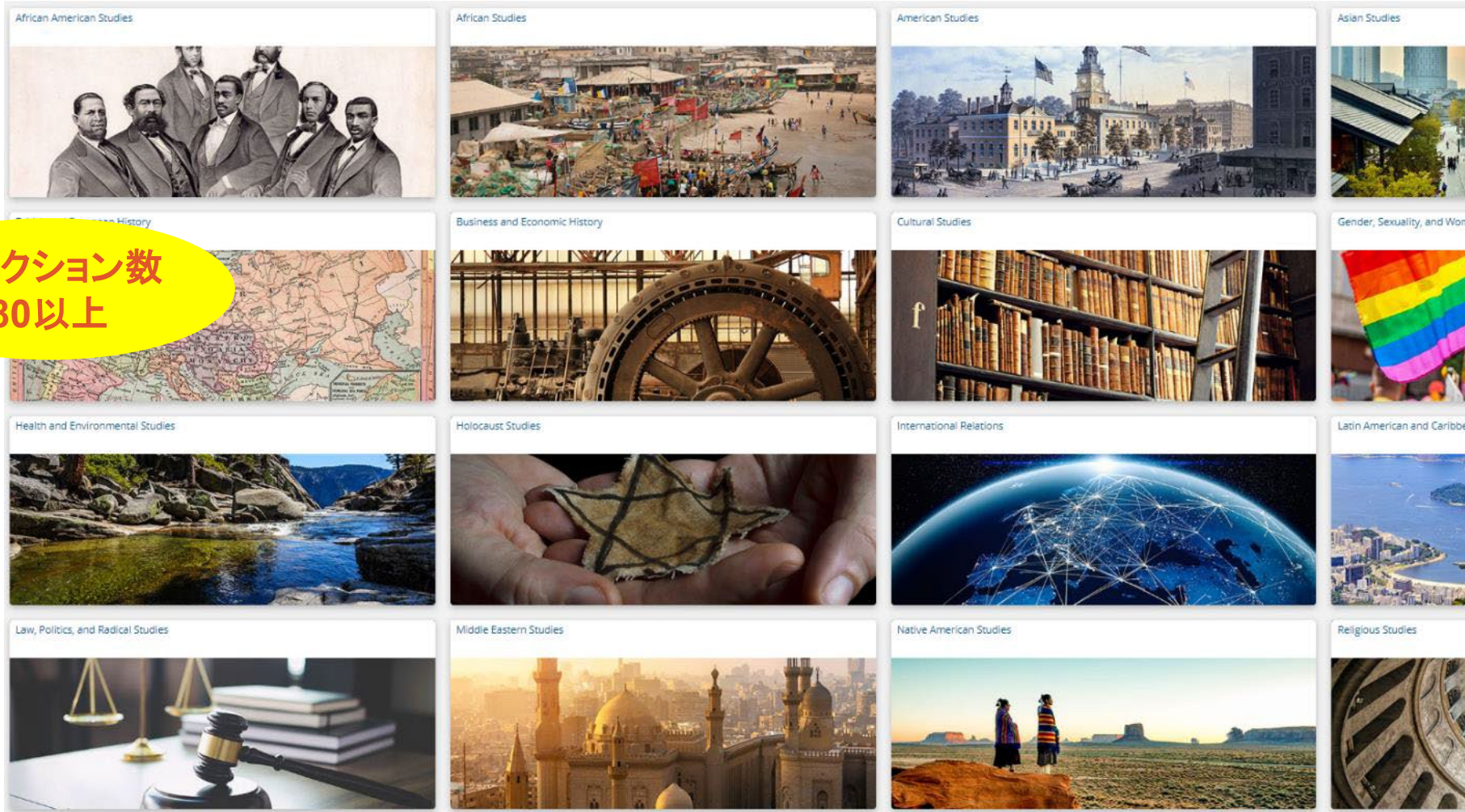


# アーカイブズ・アンバウンド Archives Unbound について

## 主要分野

- アメリカ研究
- **アジア研究**
- ヨーロッパ研究
- 中東研究
- ラテンアメリカ研究
- 国際関係研究
- 日系アメリカ人研究
- アフリカ系アメリカ人研究
- 宗教研究
- など、など

コレクション数  
80以上





# 上海租界・海関関係のコレクション

**NEW!**



上海の租界時代資料集:  
企業・金融・保険関係

**NEW!**



上海の租界時代資料集:  
出版・報道・教育・医療・慈善関係

**NEW!**



上海の租界時代資料集:  
『ソーシャル・シヤンハイ』

**NEW!**



上海の租界時代資料集:  
社交クラブ関係

**NEW!**



上海の租界時代資料集:  
その他

**NEW!**



上海共同租界工部局年報・各部門報告書・納税人会議録・ほか

**NEW!**



上海市参事会議事録  
1854-1943年

**NEW!**



上海市工部局官報  
1908-1942年

**NEW!**



上海共同租界:  
都市計画と開発

**NEW!**



上海共同租界工部局警務処政治部文書集

**NEW!**



中国海関職員録および黄浦河道局・上海港報告集

**NEW!**



中国海関出版物集

**NEW!**



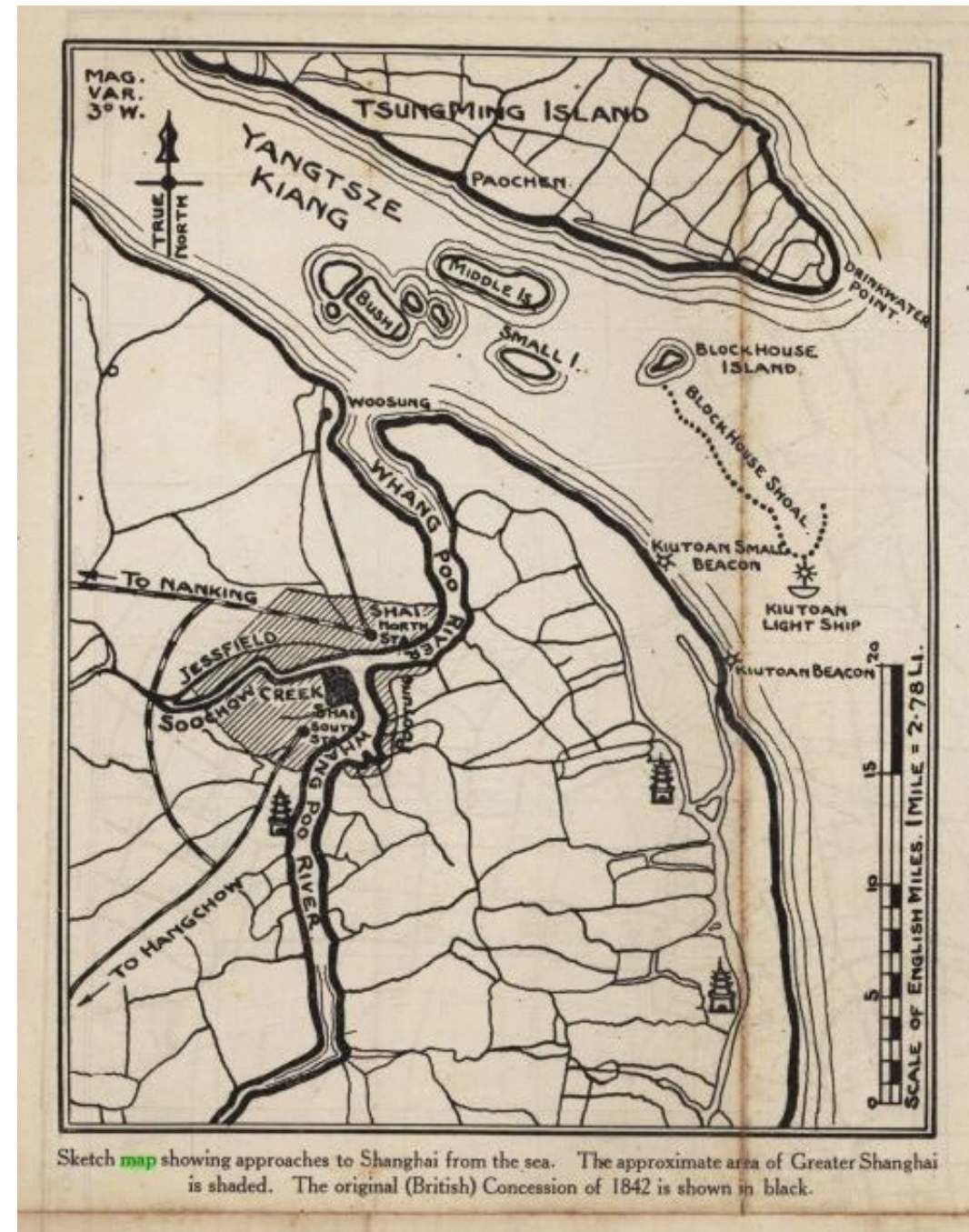
中国海関官報  
1869-1913年

**NEW!** = 2021年の新リリース

# 上海共同租界について

- 1842年：アヘン戦争後の南京条約で上海を含む5港の開港が決まる
- 1845年～1849年：イギリス、アメリカ、フランスによる租界設置
- 1854年：工部局 (Shanghai Municipal Council) が組織される
- 1863年：イギリス租界とアメリカ租界が合併し、  
共同租界 (Shanghai International Settlement) に
- 1920年代～1930年代：上海租界の“黄金時代”
- 1937年：日中戦争開始
- 1941-1945年：太平洋戦争・日本軍による租界進駐
- 1949年：中華人民共和国建国

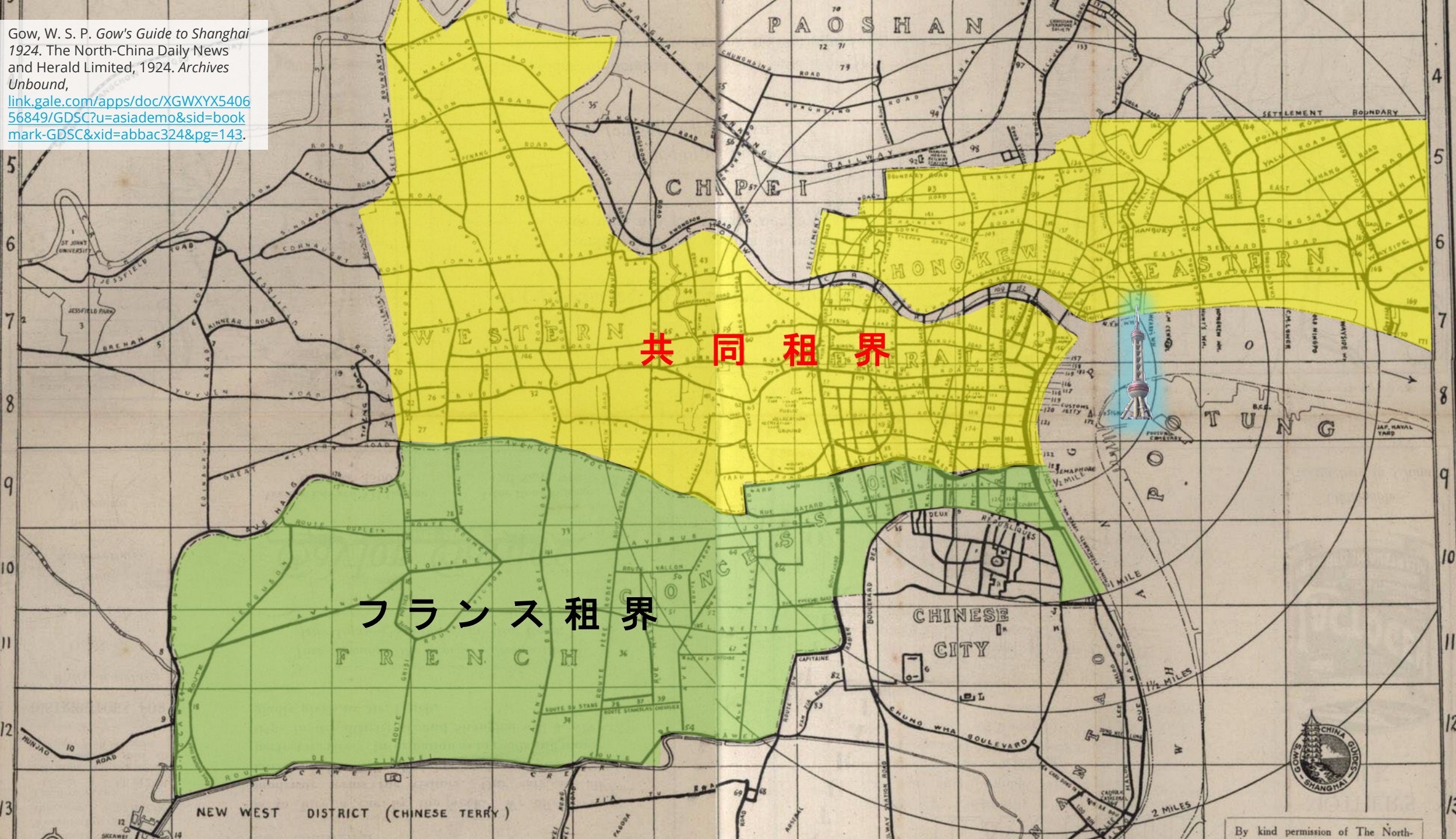
Gow, W. S. P. *Gow's Guide to Shanghai 1924*. The North-China Daily News and Herald Limited, 1924. *Archives Unbound*, [link.gale.com/apps/doc/XGWXYX540656849/GDSC?u&asiadem\\_o&sid=bookmark-GDSC&xid=abbac324&pg=144](https://link.gale.com/apps/doc/XGWXYX540656849/GDSC?u&asiadem_o&sid=bookmark-GDSC&xid=abbac324&pg=144).



Sketch map showing approaches to Shanghai from the sea. The approximate area of Greater Shanghai is shaded. The original (British) Concession of 1842 is shown in black.



Gow, W. S. P. *Gow's Guide to Shanghai* 1924. The North-China Daily News and Herald Limited, 1924. Archives Unbound, [link.gale.com/apps/doc/XGWXYX540656849/GDSC?u=asiademo&sid=bookmark-GDSC&id=abbc324&pg=143](http://link.gale.com/apps/doc/XGWXYX540656849/GDSC?u=asiademo&sid=bookmark-GDSC&id=abbc324&pg=143).





All about Shanghai and Environs a Standard Guide  
Book Historical and Contemporary Facts and Statistics.  
The University Press, 1934-35. Archives Unbound,  
[link.gale.com/apps/doc/XGWGQB605721253/GDSC  
?u=asiademo&sid=bookmark-  
GDSC&xid=96bd6ade&pg=3](https://link.gale.com/apps/doc/XGWGQB605721253/GDSC?u=asiademo&sid=bookmark-GDSC&xid=96bd6ade&pg=3).



*Aerial View of The Bund Business District and Whangpoo  
River (Courtesy of China National Aviation Corp.)*

# 上海の租界時代資料集（5コレクション）

## PAPERS OF OLD SHANGHAI (5 COLLECTIONS)

- ◆ 企業・金融・保険関係 1874-1949年  
**Papers of Old Shanghai: Business, Banking, and Insurance, 1874–1949**
- ◆ 出版・報道・教育・医療・慈善関係 1863-1948年  
**Papers of Old Shanghai: Press, Education, Healthcare, and Charity, 1863–1948**
- ◆ 外国人女性向け月刊誌『ソーシャル・シャンハイ』1906-1912年  
**Papers of Old Shanghai: Social Shanghai, 1906-1912**
- ◆ 社交クラブ関係 1890-1942年  
**Papers of Old Shanghai: Societies and Clubs, 1890–1942**
- ◆ その他 1853-1945年  
**Papers of Old Shanghai: Miscellanies, 1853-1945**



- 収録年代: 1853-1949
- 原本: 上海古籍出版社(上海図書館)
- 総ページ数: 約61,900



# 上海の租界時代資料集：企業・金融・保険関係 1874-1949年

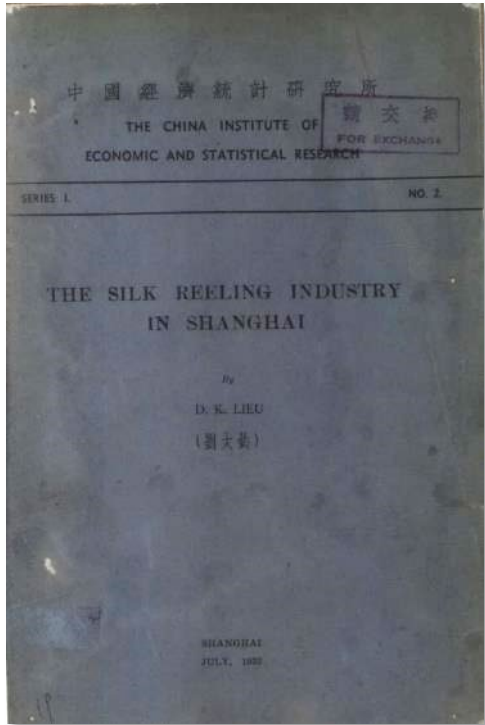
## PAPERS OF OLD SHANGHAI: BUSINESS, BANKING, AND INSURANCE, 1874–1949

- 上海の興隆を支えた対外貿易、商業、銀行業などの企業は、事業を展開する中で、様々な書籍、パンフレット等の刊行物や未刊行文書を生み出しました。
- 本コレクションは、上海商工会議所、関税委員会、中国銀行が編纂した商品の卸売価格、小売価格、輸出入品の価格を記載した報告書、共同租界を外国人に紹介するために発行されたガイドブック、便覧、企業や経済情報ダイレクトリー、中国の新興株式市場、証券市場、金融問題、上海に拠点を置く中国系銀行や外国系銀行に関する報告書やハンドブック、外国為替換算表、保険料や関税に関する手引、外国系企業や中国系企業、中国在住外国人の現状に関する文書を幅広く収録します。

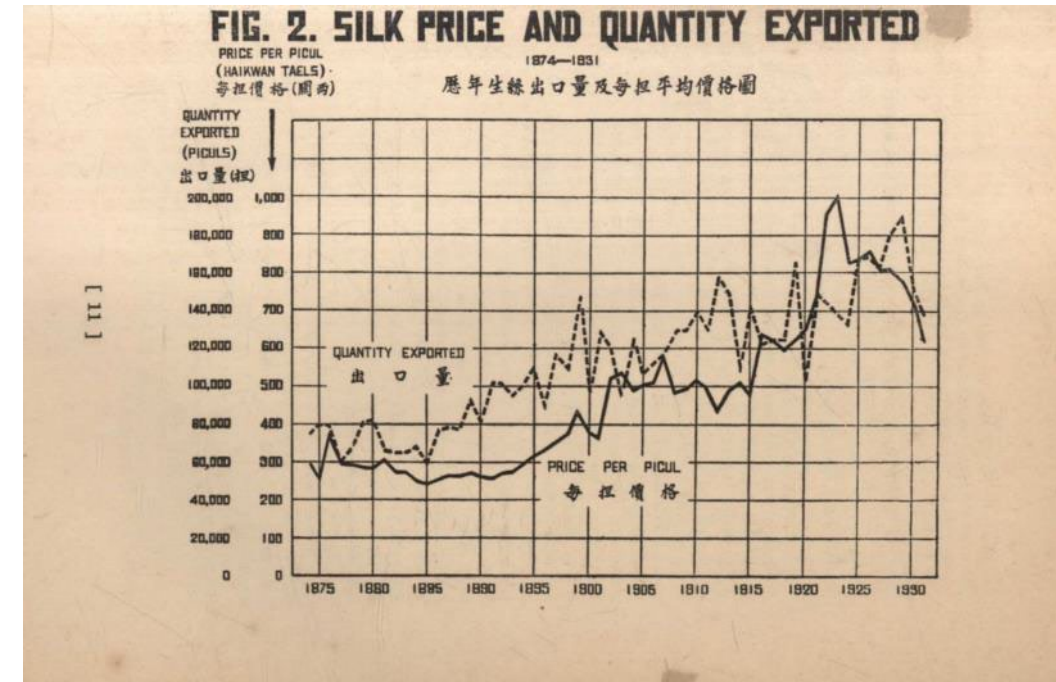
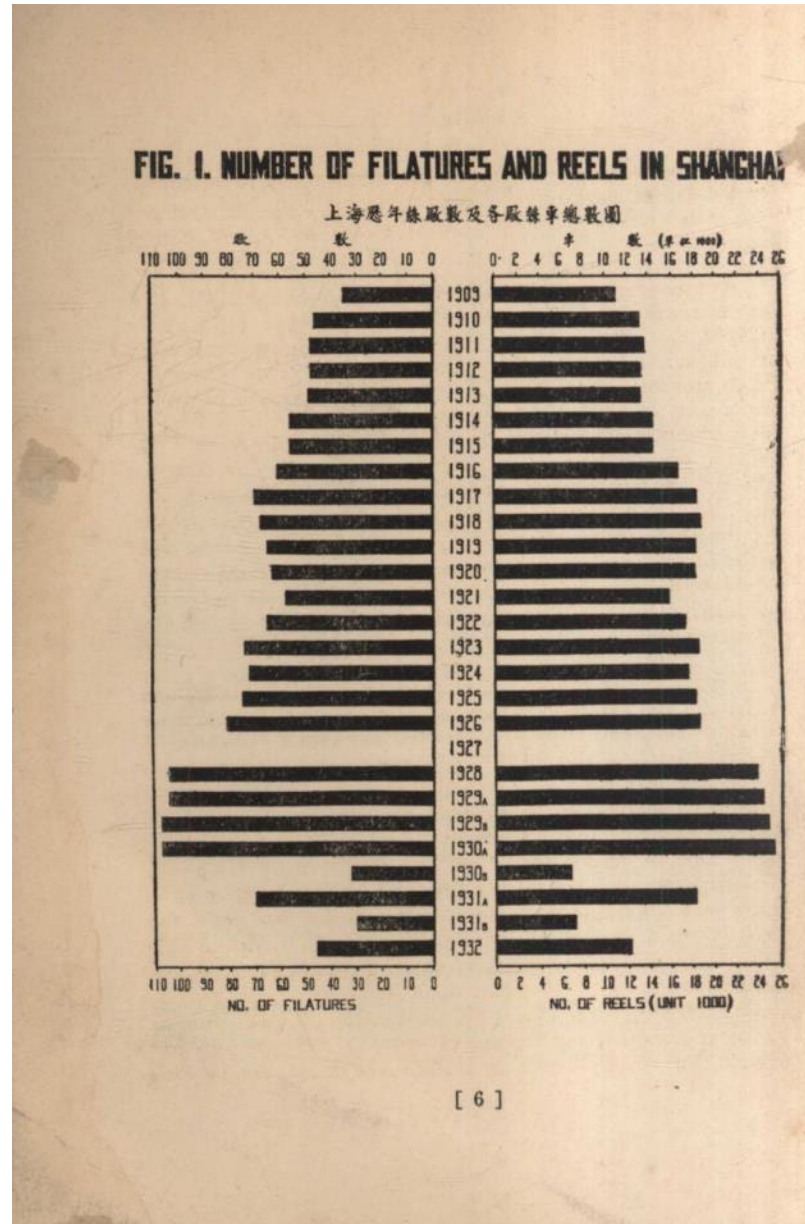


- 収録年代: 1890-1942
- 原本: 上海古籍出版社 (上海図書館)
- 全54点・12,500ページ以上

# 上海の租界時代資料集：企業・金融・保険関係 1874-1949年より

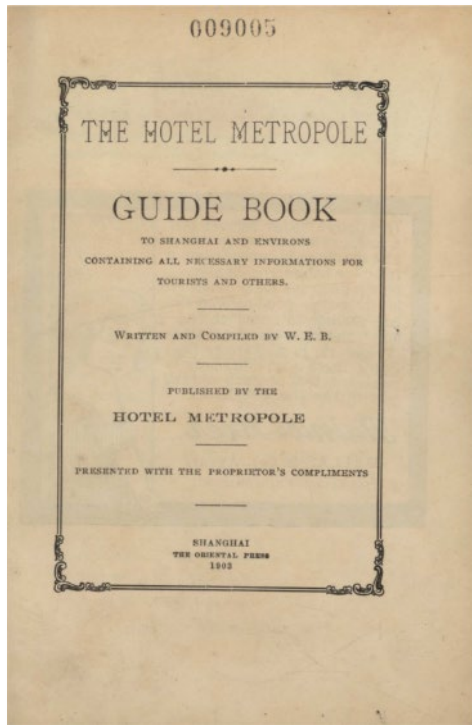


Lieu, D. K. *The Silk Reeling Industry in Shanghai*. N.p., July 1933. Archives Unbound, [link.gale.com/apps/doc/XGIMO W954225685/GDSC?u=asiadem o&sid=bookmark-GDSC&xid=95dff46e&pg=1](http://link.gale.com/apps/doc/XGIMO W954225685/GDSC?u=asiadem o&sid=bookmark-GDSC&xid=95dff46e&pg=1).





# 上海の租界時代資料集：企業・金融・保険関係 1874-1949年より



W. E. B. *The Hotel Metropole Guide Book to Shanghai and Environs Containing All Necessary Informations for Tourists and Others.* The Hotel Metropole, 1903. *Archives Unbound*, [link.gale.com/apps/doc/XGWMCB778894271/GDSC?u=asiademo&sid=bookmark-GDSC&xid=6725e4a9&pg=4](http://link.gale.com/apps/doc/XGWMCB778894271/GDSC?u=asiademo&sid=bookmark-GDSC&xid=6725e4a9&pg=4).

THE STORY OF THE  
**CELEBRATED HIRANO SPRINGS**

The advertisement features a central circular illustration of a scenic landscape with a waterfall. Above the illustration is the word 'HIRANO' in a stylized font. Below the illustration is the text 'H. REYNELL & CO. KOBE, JAPAN.' and 'NATURAL MINERAL WATER'. To the right of the illustration is the vertical text '平野鏡泉' and 'MARK 登録 商標'. To the left is 'TRADE MARK' and '大日本兵庫縣下津國神戶市北長崎通七丁目發售本舖 内田幸三郎'. Below the illustration, it says 'BRIGHT SPARKLING AND EFFERVESCENT EXCELLENT ALONE OR WITH WINE OR SPIRITS. THE BOTTLES SHOULD BE LAID ON THEIR SIDES.' At the bottom, it says 'ASK FOR REYNELL'S HIRANO THE ONLY GENUINE. W. Reynell'.

THE extraordinary popularity throughout the Far East of HIRANO is not to be wondered at when one has quenched his thirst in a glass of the sparkling, life-giving spring water. In this germ-infested country, where the boiling and distillation of drinking water is absolutely essential

**International Bicycle Co.**  
No. 392-95 NANKING ROAD and No. 7 BROADWAY ROAD  
SHANGHAI  
—:O:—  
PEKING TIENTSIN HANKOW

**HUMBER, COLUMBIA AND IMPERIAL CYCLES**  
SMITH PREMIER AND Remington Typewriters  
Typewriters for Hire

A detailed illustration of a vintage bicycle with a diamond frame, large wheels, and a chain drive.

**Ballistite Cartridges**  
AND SPORTING GUNS  
All Kinds of Sporting Guns and Ammunition

A collection of various Buddha statues, some seated and some standing, arranged on a platform. Each statue has a small number on its base.

GENUINE PEKIN JOSSES

The above Company have also a very fine collection of genuine **Pekin Josses** at any **Moderate Prices**.  
Inspection cordially invited

# 上海の租界時代資料集：出版・報道・教育・医療・慈善関係 1863-1948年

## PAPERS OF OLD SHANGHAI: PRESS, EDUCATION, HEALTHCARE, AND CHARITY, 1863-1948

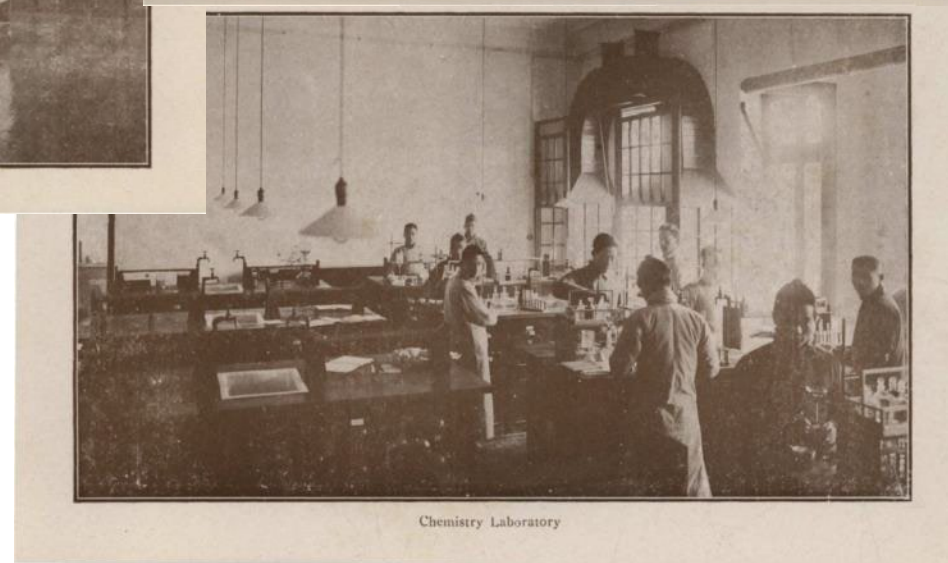
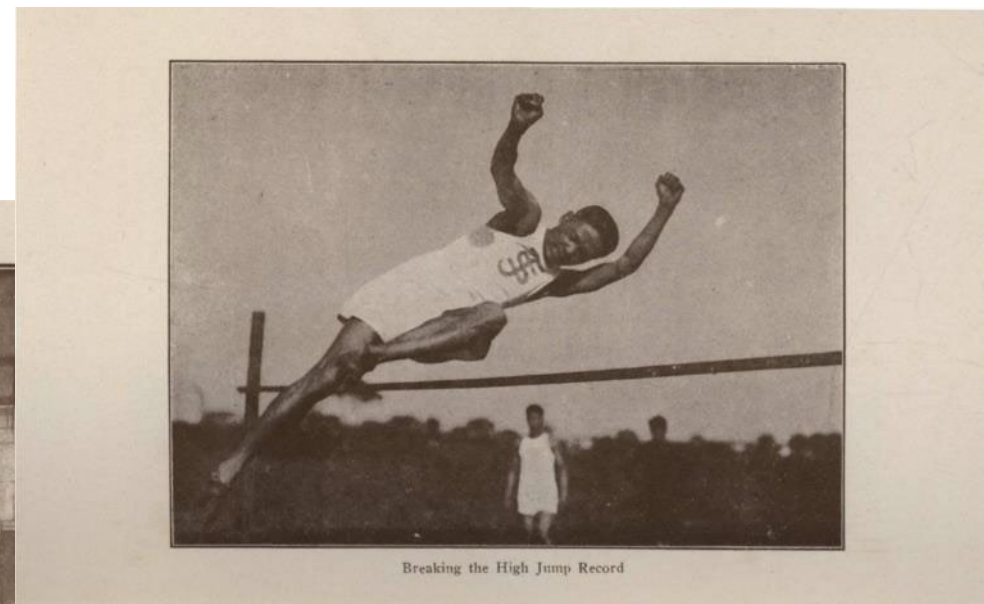
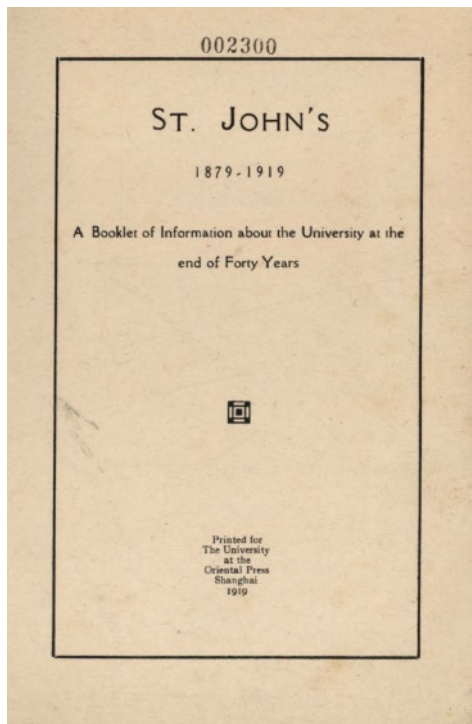
- 西洋の宣教師、実業家によって大学や学校の創設が相次いだ上海は、教育の先進地域でもありました。また、多くの出版物や新聞が発行された都市でもあります。
- 宣教師や実業家、工部局は多くの病院も設立し、公衆衛生制度の確立に重要な役割を演じました。また、孤児、難民、飢餓民らの救援を目的とする慈善活動も盛んでした。
- 本コレクションは、上海の新聞史を論じた書籍、新聞・雑誌便覧、教育機関の報告書、便覧、写真アルバム、中国におけるキリスト教史に関する研究書、医療機関や慈善団体の年報等を提供するもので、租界時代の上海における出版、教育、医療、慈善活動に光を当てます。



- 収録年代: 1863-1948
- 原本: 上海古籍出版社 (上海図書館)
- 76冊・7,200ページ数以上



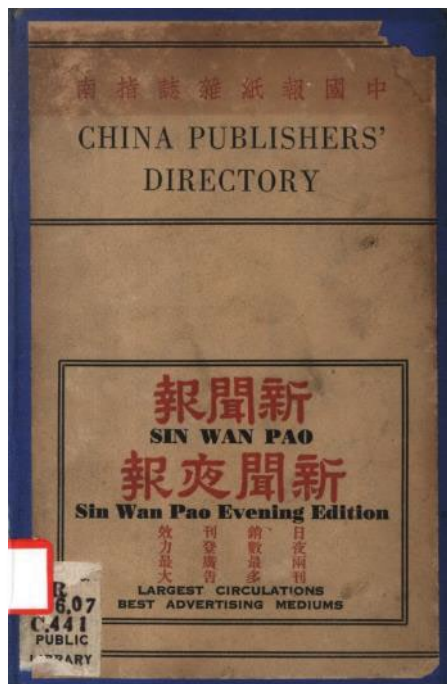
# 上海の租界時代資料集：出版・報道・教育・医療・慈善関係 1863-1948年より



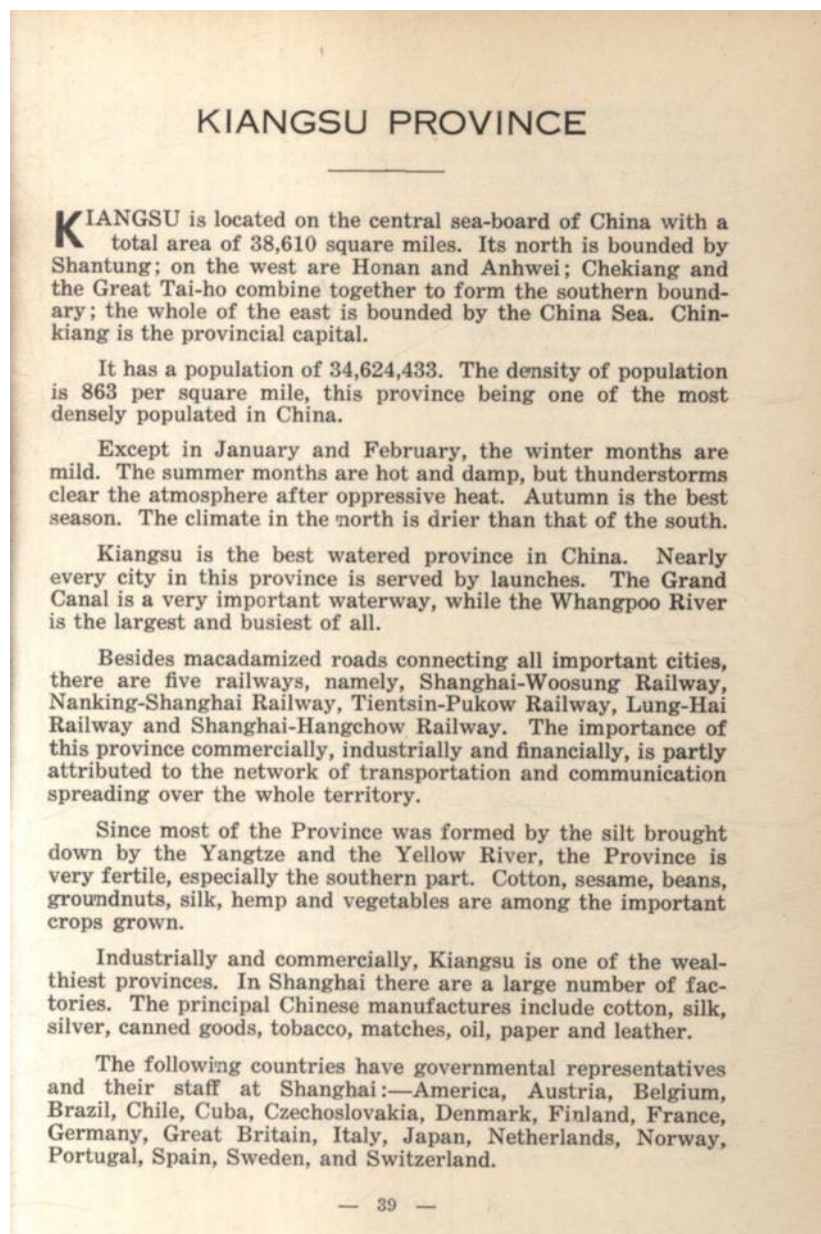
St. John's 1879-1919 a Booklet of Information about the University at the End of Forty Years. The University at the Oriental Press, 1919. Archives Unbound, [link.gale.com/apps/doc/XFMRRZ757525657/GDSC?u=asiademo&sid=bookmark-GDSC&xid=753f625a&pg=3](http://link.gale.com/apps/doc/XFMRRZ757525657/GDSC?u=asiademo&sid=bookmark-GDSC&xid=753f625a&pg=3).



# 上海の租界時代資料集：出版・報道・教育・医療・慈善関係 1863-1948年より



China Publishers' Directory a Practical Guide to Newspapers and Periodicals for China Advertisers. China Commercial Advertising Agency, 1934. Archives Unbound, [link.gale.com/apps/doc/XFLPNX163748211/GDSC?u=asiademo&sid=bookmark-GDSC&xid=17e0020a&pg=1](http://link.gale.com/apps/doc/XFLPNX163748211/GDSC?u=asiademo&sid=bookmark-GDSC&xid=17e0020a&pg=1).



## KIANGSU PROVINCE

**K**IANGSU is located on the central sea-board of China with a total area of 38,610 square miles. Its north is bounded by Shantung; on the west are Honan and Anhwei; Chekiang and the Great Tai-ho combine together to form the southern boundary; the whole of the east is bounded by the China Sea. Chinkiang is the provincial capital.

It has a population of 34,624,433. The density of population is 863 per square mile, this province being one of the most densely populated in China.

Except in January and February, the winter months are mild. The summer months are hot and damp, but thunderstorms clear the atmosphere after oppressive heat. Autumn is the best season. The climate in the north is drier than that of the south.

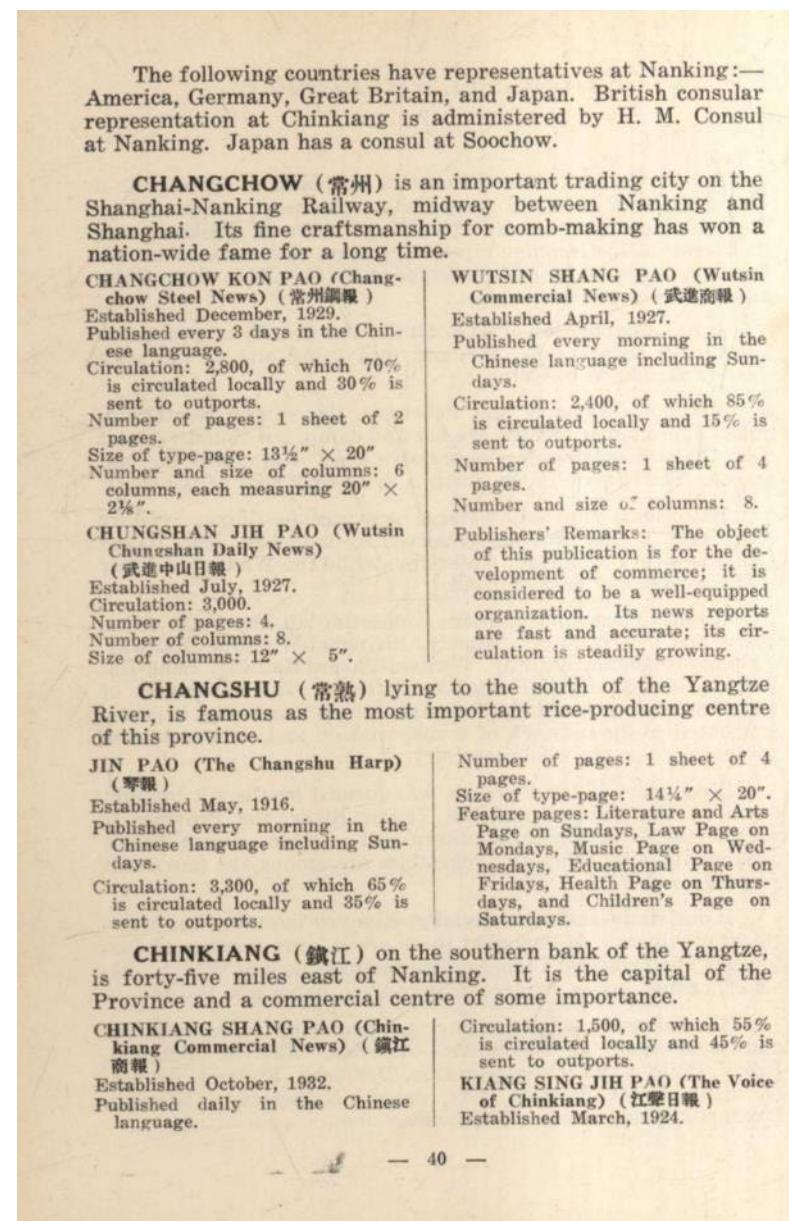
Kiangsu is the best watered province in China. Nearly every city in this province is served by launches. The Grand Canal is a very important waterway, while the Whangpoo River is the largest and busiest of all.

Besides macadamized roads connecting all important cities, there are five railways, namely, Shanghai-Woosung Railway, Nanking-Shanghai Railway, Tientsin-Pukow Railway, Lung-Hai Railway and Shanghai-Hangchow Railway. The importance of this province commercially, industrially and financially, is partly attributed to the network of transportation and communication spreading over the whole territory.

Since most of the Province was formed by the silt brought down by the Yangtze and the Yellow River, the Province is very fertile, especially the southern part. Cotton, sesame, beans, groundnuts, silk, hemp and vegetables are among the important crops grown.

Industrially and commercially, Kiangsu is one of the wealthiest provinces. In Shanghai there are a large number of factories. The principal Chinese manufactures include cotton, silk, silver, canned goods, tobacco, matches, oil, paper and leather.

The following countries have governmental representatives and their staff at Shanghai:—America, Austria, Belgium, Brazil, Chile, Cuba, Czechoslovakia, Denmark, Finland, France, Germany, Great Britain, Italy, Japan, Netherlands, Norway, Portugal, Spain, Sweden, and Switzerland.



The following countries have representatives at Nanking:—America, Germany, Great Britain, and Japan. British consular representation at Chinkiang is administered by H. M. Consul at Nanking. Japan has a consul at Soochow.

**CHANGCHOW (常州)** is an important trading city on the Shanghai-Nanking Railway, midway between Nanking and Shanghai. Its fine craftsmanship for comb-making has won a nation-wide fame for a long time.

**CHANGCHOW KON PAO (Changchow Steel News) (常州鋼報)**  
Established December, 1929.  
Published every 3 days in the Chinese language.  
Circulation: 2,800, of which 70% is circulated locally and 30% is sent to outports.  
Number of pages: 1 sheet of 2 pages.  
Size of type-page: 13½" × 20"  
Number and size of columns: 6 columns, each measuring 20" × 2½".

**CHUNGSHAN JIH PAO (Wutsin Chuneshan Daily News) (武進中山日報)**  
Established July, 1927.  
Circulation: 3,000.  
Number of pages: 4.  
Number of columns: 8.  
Size of columns: 12" × 5".

**CHANGSHU (常熟)** lying to the south of the Yangtze River, is famous as the most important rice-producing centre of this province.

**JIN PAO (The Changshu Harp) (琴報)**  
Established May, 1916.  
Published every morning in the Chinese language including Sundays.  
Circulation: 3,300, of which 65% is circulated locally and 35% is sent to outports.

**CHINKIANG (鎮江)** on the southern bank of the Yangtze, is forty-five miles east of Nanking. It is the capital of the Province and a commercial centre of some importance.

**CHINKIANG SHANG PAO (Chinkiang Commercial News) (鎮江商報)**  
Established October, 1932.  
Published daily in the Chinese language.

**WUTSIN SHANG PAO (Wutsin Commercial News) (武進商報)**  
Established April, 1927.  
Published every morning in the Chinese language including Sundays.

Circulation: 2,400, of which 85% is circulated locally and 15% is sent to outports.  
Number of pages: 1 sheet of 4 pages.  
Number and size of columns: 8.

**Publishers' Remarks:** The object of this publication is for the development of commerce; it is considered to be a well-equipped organization. Its news reports are fast and accurate; its circulation is steadily growing.

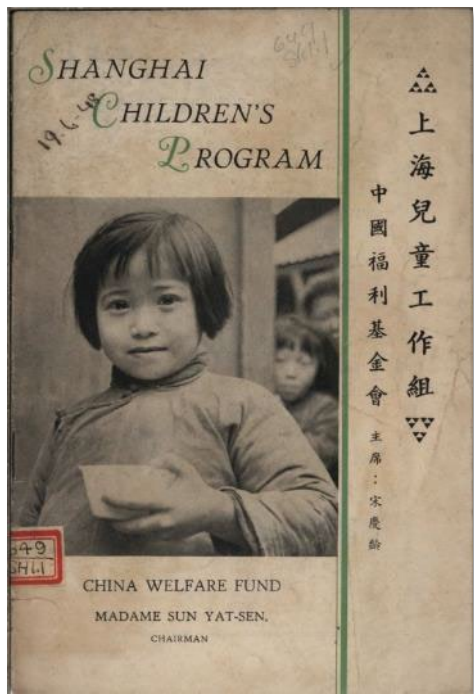
Number of pages: 1 sheet of 4 pages.  
Size of type-page: 14½" × 20".  
Feature pages: Literature and Arts Page on Sundays, Law Page on Mondays, Music Page on Wednesdays, Educational Page on Fridays, Health Page on Thursdays, and Children's Page on Saturdays.

Circulation: 1,500, of which 55% is circulated locally and 45% is sent to outports.

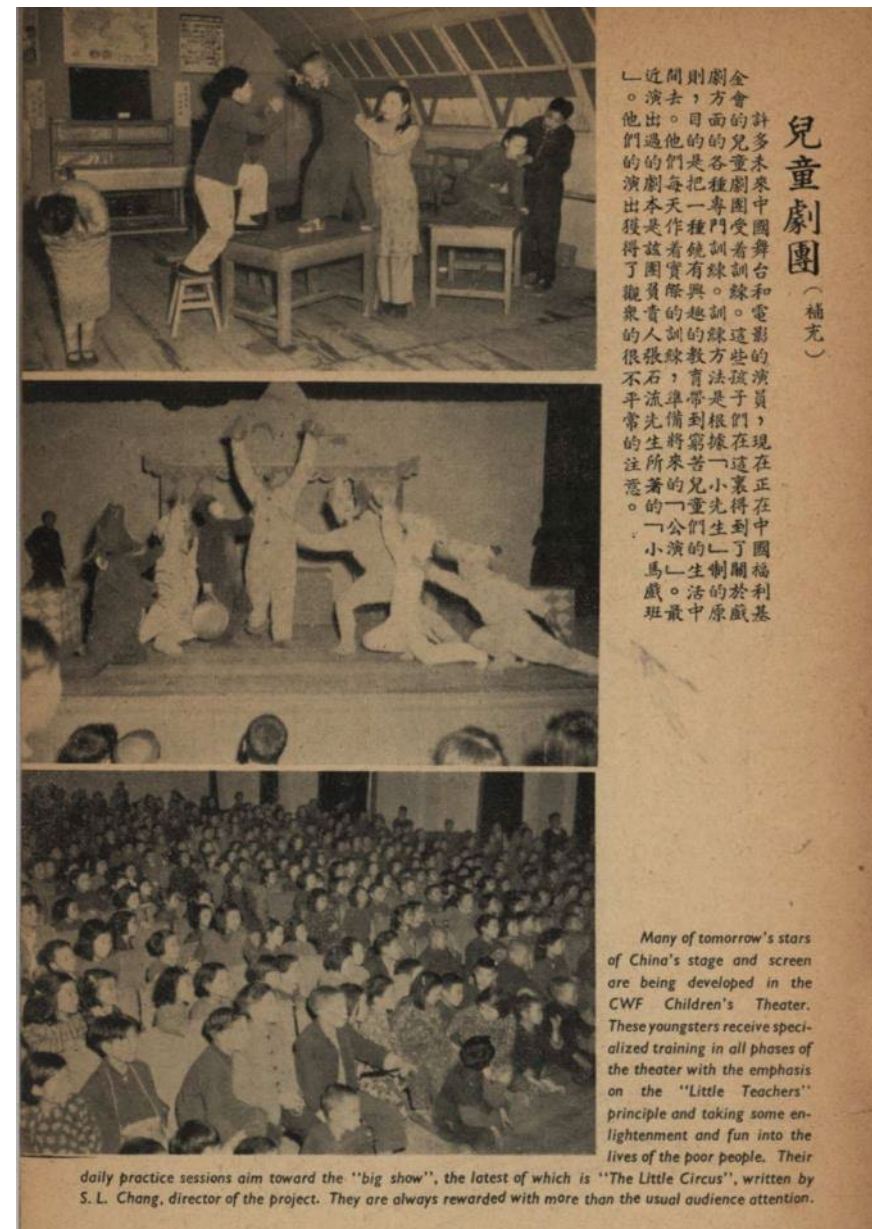
**KIANG SING JIH PAO (The Voice of Chinkiang) (江聲日報)**  
Established March, 1924.



# 上海の租界時代資料集：出版・報道・教育・医療・慈善関係 1863-1948年より



Shanghai Children's Program. N.d.  
Archives Unbound,  
[link.gale.com/apps/doc/XGGNOB343149221/GDSC?u=asiademo&sid=bookmark-GDSC&xid=2480ccfb&pg=1](http://link.gale.com/apps/doc/XGGNOB343149221/GDSC?u=asiademo&sid=bookmark-GDSC&xid=2480ccfb&pg=1).



# 上海の租界時代資料集：『ソーシャル・シャンハイ』 1906-1912年

## PAPERS OF OLD SHANGHAI: SOCIAL SHANGHAI

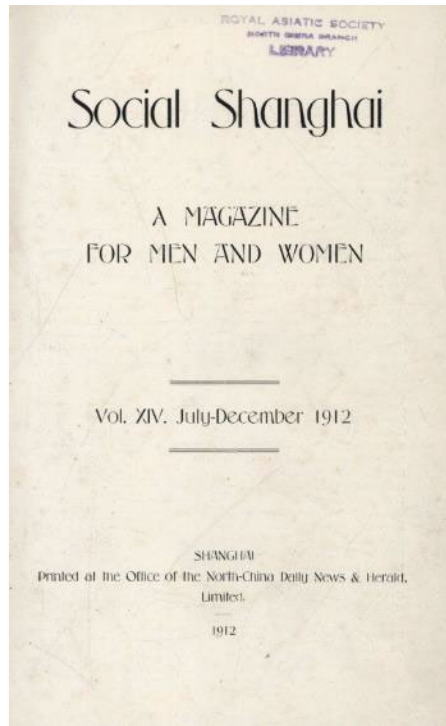
- 『ソーシャル・シャンハイ』誌は1906年初頭にグラスゴー出身のイギリス人マイナ・ショロック(Mina Shorrocks)により創刊された雑誌です。当初、租界に生活する外国人女性のための月刊誌として創刊された同誌は、次第に取り上げる対象を拡大し、ファッション、スポーツ、娯楽、結婚式、園芸、インテリア、社交、旅行、展覧会から、文学、書評、音楽、さらには租界行政まで、上海その他の条約港の社会文化生活全般を扱う総合誌の性格を帯びるようになりました。同誌は中国で発行された欧語雑誌では写真を多用した初めての雑誌でもあります。
- 本コレクションは、1906年から1912年に発行された第2巻から第14巻まで(第1巻・第13巻が欠落)、号数では34号分を収録します。



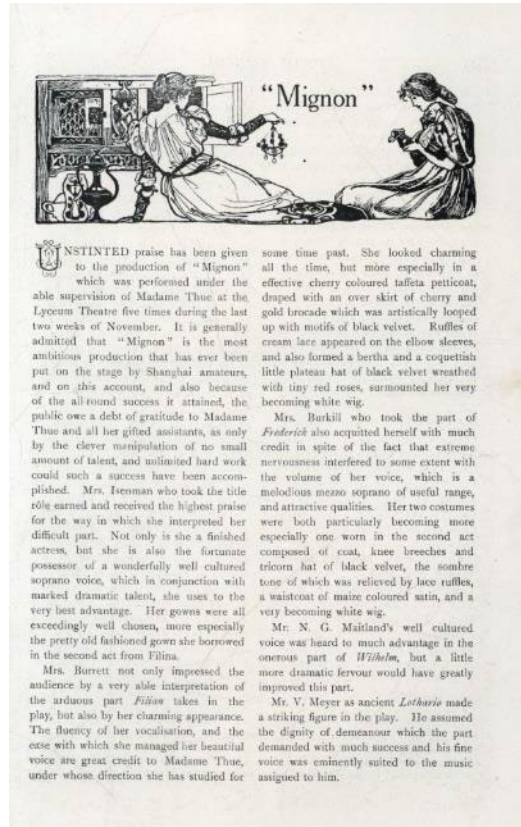
- 収録年代: 1906-1912
- 原本: 上海古籍出版社 (上海図書館)
- 12巻・4,400ページ以上



# 上海の租界時代資料集：『ソーシャル・シャンハイ』1906-1912年より

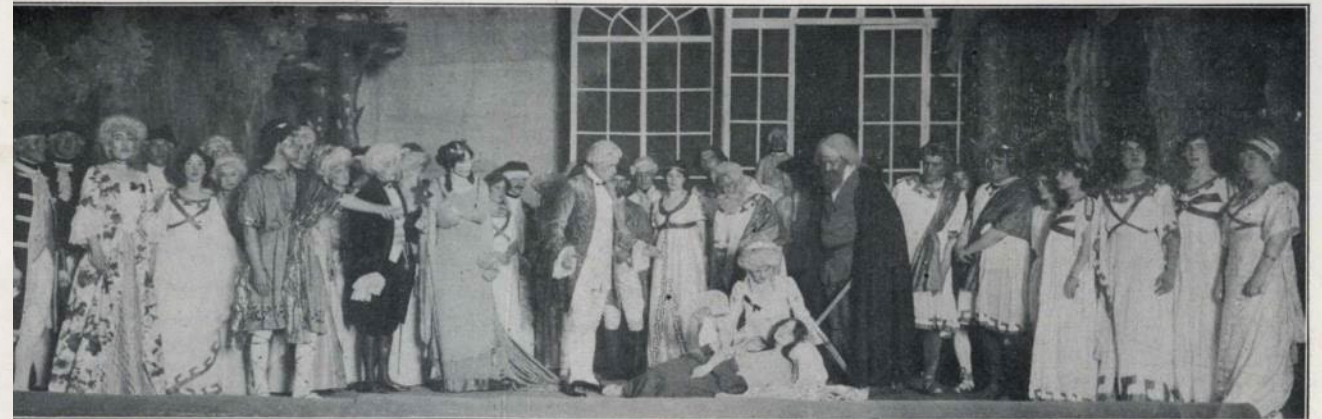


*Social Shanghai* a Magazine for Men and Women Vol. XIV. July-December 1912. The Office of the North-China Daily News & Herald, Limited, 1912. *Archives Unbound*, [link.gale.com/apps/doc/XJTJXP836618036/GDSC?u=asiademo&sid=bookmark-GDSC&id=d7a98b2c&pg=262](http://link.gale.com/apps/doc/XJTJXP836618036/GDSC?u=asiademo&sid=bookmark-GDSC&id=d7a98b2c&pg=262).



UNSTINTED praise has been given to the production of "Mignon" which was performed under the able supervision of Madame Thue at the Lyceum Theatre five times during the last two weeks of November. It is generally admitted that "Mignon" is the most ambitious production that has ever been put on the stage by Shanghai amateurs, and on this account, and also because of the all-round success it attained, the public owe a debt of gratitude to Madame Thue and all her gifted assistants, as only by the clever manipulation of no small amount of talent, and unlimited hard work could such a success have been accomplished. Mrs. Iremman who took the title rôle earned and received the highest praise for the way in which she interpreted her difficult part. Not only is she a finished actress, but she is also the fortunate possessor of a wonderfully well cultured soprano voice, which in conjunction with marked dramatic talent, she uses to the very best advantage. Her gowns were all exceedingly well chosen, more especially the pretty old fashioned gown she borrowed in the second act from Filina.

Mrs. Burrett not only impressed the audience by a very able interpretation of the arduous part *Filina* takes in the play, but also by her charming appearance. The fluency of her vocalisation, and the ease with which she managed her beautiful voice are great credit to Madame Thue, under whose direction she has studied for some time past. She looked charming all the time, but more especially in a effective cherry coloured taffeta petticoat, draped with an over skirt of cherry and gold brocade which was artistically looped up with motifs of black velvet. Ruffles of cream lace appeared on the elbow sleeves, and also formed a bertha and a coquetish little plateau hat of black velvet wreathed with tiny red roses, surmounted her very becoming white wig.



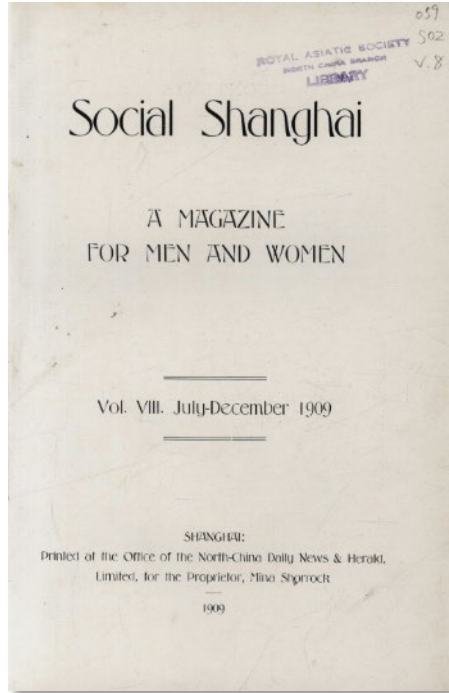
Photo

TWO SCENES FROM MIGNON

Rembrandt



# 上海の租界時代資料集：『ソーシャル・シャンハイ』1906-1912年より



*Social Shanghai* a Magazine for Men and Women Vol. VIII. July-December 1909. The Office of the North-China Daily News & Herald, Limited, 1909. Archives Unbound,

[link.gale.com/apps/doc/XJQWCL170965816/GDSC?u=asiademo3&sid=bookmark-GDSC&xid=bf01f5bf&pg=277](http://link.gale.com/apps/doc/XJQWCL170965816/GDSC?u=asiademo3&sid=bookmark-GDSC&xid=bf01f5bf&pg=277).

**First Day**

THE lovely weather of Saturday and Sunday preceding race week, led up to a great disappointment, when Monday the proposed first day of the Autumn Meeting of the Shanghai Race Club, dawned in such a mist and downpour of rain, that the Stewards were constrained to postpone the Meeting

conspicuous by its absence. However, *Russley* distinguished himself by beating his own time in last year's Leger by  $6\frac{3}{8}$  secs.

A point of comment was the time in which *Millepattes* won the British Navy Cup, which, despite the fact that this race is open only to untried griffins of Tls. 150 limit, was  $1\frac{3}{8}$  secs. faster than

Photo A SUCCESS FOR THE "TREE" STABLE Sallow

till the next day. The usual result of a postponement happened. The Meeting on Tuesday lacked enthusiasm, and the attendance was not up to the general standard. However, no rain fell, and although the weather was a little too

in the Maidens which is over the same distance, and the price of the ponies unlimited.

The most successful jockey of the day was Mr. Burkill with four firsts, two seconds, and a third. The most successful

Photo MR. BURKILL ON SPRING ROSE, MR. MOLLER ON SAGITTARIUS, AND MR. VIDA ON MORIAK Sallow

warm to be seasonable, it was pleasant, and improved as the day progressed. Despite the heavy rains on Monday, the course was not so bad as might have been expected, but the going was necessarily heavy and record breaking

stable was that of Mr. Buxey, a *Rose* winning the Criterion, Fahwah Stakes, and the Autumn Cup. The largest dividend of the day was \$174.70 paid on *Millepattes*, and the largest place dividend was \$41.50, paid on *Gothic* for a second place.

278 SOCIAL SHANGHAI

|   |   |
|---|---|
| <p>5.—The Pari-Mutual Cup</p> <p>Mr. Ballnus' ches. Fabulus (Mr. Moller) ... 1<br/>         ,, H. P. White's brown Barry (Mr. Dupree)... 2<br/>         Messrs. Toeg &amp; Speelman's grey Susquehanna (Mr. J. A. Hayes) ... 3</p> <p>6.—The Manchu Stakes</p> <p>Mr. W. G. Pirie's cream Milkman (Mr. C. R. Burkill) ... 1<br/>         ,, Hasty's grey P'm Off (Mr. P. Crighton) ... 2<br/>         ,, Dick Turpin's bay Valerian (Mr. Tempriere) 3</p> | <p>9.—The Jockey Cup</p> <p>Mr. Ring's grey Capello (Mr. Fock) ... 1<br/>         ,, Hays' grey Scafarer (Mr. King) ... 2<br/>         ,, Aventi's grey Snippet (Mr. Eggers) ... 3</p> <p style="text-align: center;">❖</p> <p style="text-align: center;">Off Day</p> <p>THE off day was in all respects the most successful of the Meeting, for both weather and racing were a decided improvement on the earlier days. Although the course was not exactly ideal, it had decidedly improved since Thursday, and some excellent finishes were seen. The improved weather tempted a large number of spectators to the course, and altogether things appeared more cheerful.</p> <p>The most interesting event of this day was the Grand National, which proved to be a splendid race, with <i>Cotswold</i></p> |
|---|---|

SOME WELL-KNOWN SHANGHAI LADIES

|  |   |
|--|---|
| <p>7.—The Consolation Cup</p> <p>Mr. Ballnus' ches. Sirius (Mr. Moller) ... 1<br/>         ,, Fash's grey Pianola (Mr. Alderton) ... 2<br/>         Messrs. Toeg &amp; Speelman's bay Sutlej (Mr. J. A. Hayes) ... 3</p> <p>8.—The Champion Sweepstakes</p> <p>Mr. Saxo-Borussia's brown Sagittarius (Mr. Moller) ... 1<br/>         ,, Buxey's ches. Spring Rose (Mr. Poulsen)... 2<br/>         ,, Buxey's black Little Gem Rose (Mr. Burkill) 3</p> | <p>finishing in a style that will not be easily forgotten. Both rider and pony proved themselves absolutely in the first rank, and <i>Cotswold</i> scored his fourth successive win in this event. The largest dividend of the day was \$325.10 paid on <i>Bowie Knife</i> with only four tickets for a win, while <i>Wilbur Wright</i> paid \$98.40 for a place.</p> |
|--|---|



# 上海の租界時代資料集：社交クラブ関係 1890-1942年

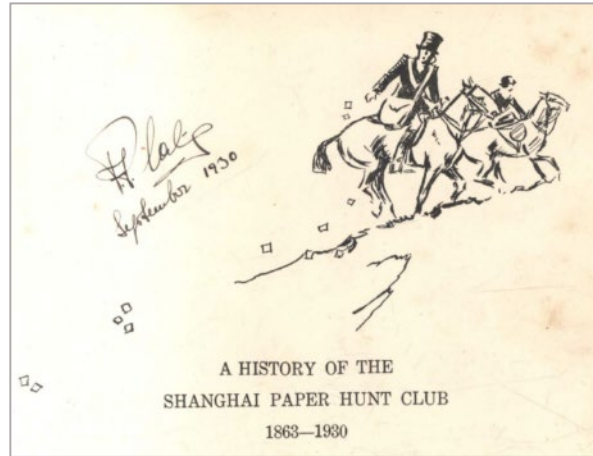
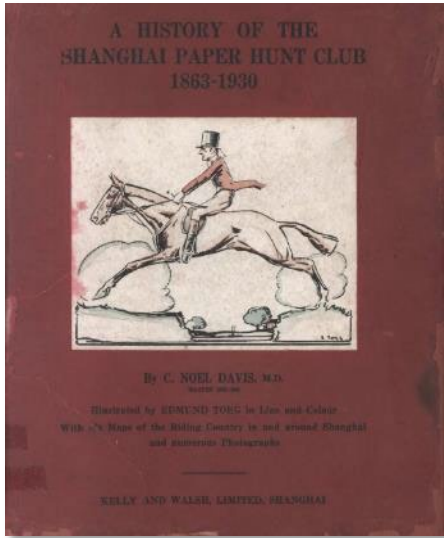
## PAPERS OF OLD SHANGHAI: SOCIETIES AND CLUBS, 1890–1942

- 上海租界には外交官、宣教師、実業家を会員とする多種多様な親睦団体、社交クラブが存在していました。出身国単位のクラブの他、同じスポーツや娯楽の愛好家のクラブ、職業クラブ、大学の同窓会等の団体も形成されました。上海ヨットクラブ、上海美術クラブ、上海園芸協会、為替仲買人協会、上海アメリカ女性クラブ、上海漫画家クラブ、上海ペーパー・ハントクラブ、中国自動車クラブ、上海アメリカ大学クラブ、上海ハーバードクラブ、中国職業教育協会、上海国際阿片委員会等々です。
- 本コレクションは、これらの社交クラブや各種団体が発行した報告書、年報、ハンドブック、会員名簿、会則、会議録、書簡等を提供します。19世紀末から20世紀半ばにいたる上海の社会と風俗に関する貴重な資料群です。



- 収録年代: 1890-1942
- 原本: 上海古籍出版社  
(上海図書館)
- 34冊・3,800ページ以上

# 上海の租界時代資料集：社交クラブ関係 1890-1942年より



Davis, C. Noel. *A History of the Shanghai Paper Hunt Club 1863-1930 with Complete Records of Hunts, Hunt Handicaps, Steeplechases and Point-To-Points*. Kelly and Walsh, Limited, 1930. Archives Unbound, [link.gale.com/apps/doc/XGZTPP850823269/GDSC?u=asiademo&sid=bookmark-GDSC&id=9c2425a3&pg=1](https://link.gale.com/apps/doc/XGZTPP850823269/GDSC?u=asiademo&sid=bookmark-GDSC&id=9c2425a3&pg=1).



# 上海の租界時代資料集：その他 1853-1945年 より

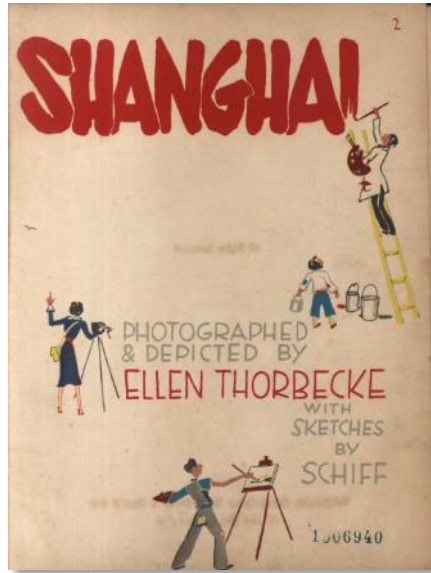
## PAPERS OF OLD SHANGHAI: MISCELLANIES, 1853-1945

- 本コレクションは、文学、芸術、言語から、戦争、歴史、法、風俗、科学まで、租界時代の上海で発行された様々な分野の刊行物を提供します。
- 上海に滞在した写真家や芸術家によって製作された、多数の図版・イラスト・写真・漫画等が掲載された作品、満州事変以後の日中の戦争をテーマにした中国、日本、西洋諸国によるプロパガンダ冊子、徐家匯天文台 (Zi-Ka-Wei Observatory) の気象学研究に関する一連の報告書、上海の動植物に関する文献等、科学の分野の文献等も収録されています。

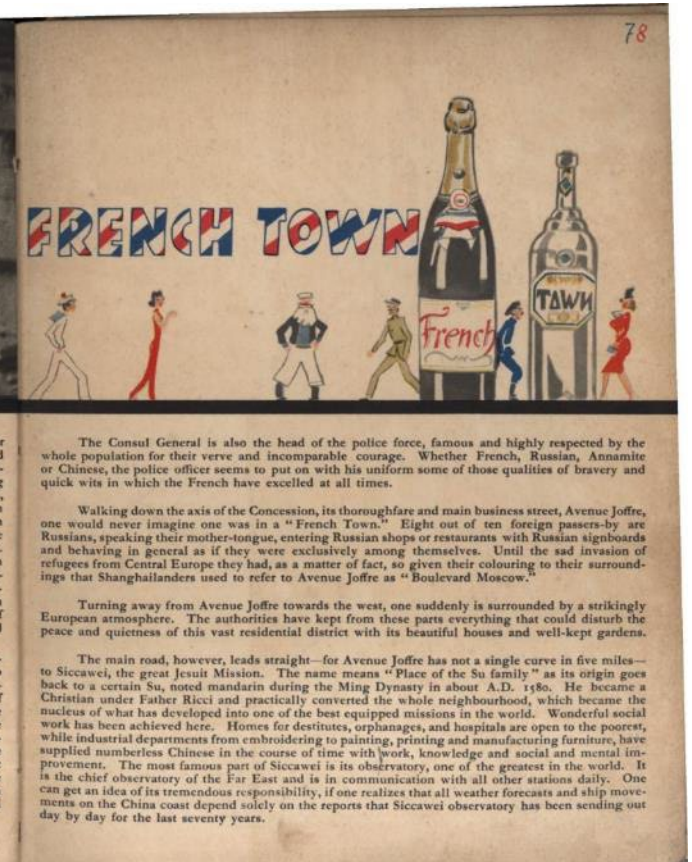


- 収録年代: 1853-1945
- 原本: 上海古籍出版社  
(上海図書館)
- 全84点・11,900ページ以上

# 上海の租界時代資料集：その他 1853-1945年 より



Thorbecke, Ellen. *Shanghai Photographed & Depicted*. North-China Daily News & Herald Ltd., n.d. *Archives Unbound*, [link.gale.com/apps/doc/XJCOYP414395243/GDSC?u=asiademo&sid=bookmark-GDSC&xid=332fa9cf&pg=5](http://link.gale.com/apps/doc/XJCOYP414395243/GDSC?u=asiademo&sid=bookmark-GDSC&xid=332fa9cf&pg=5).

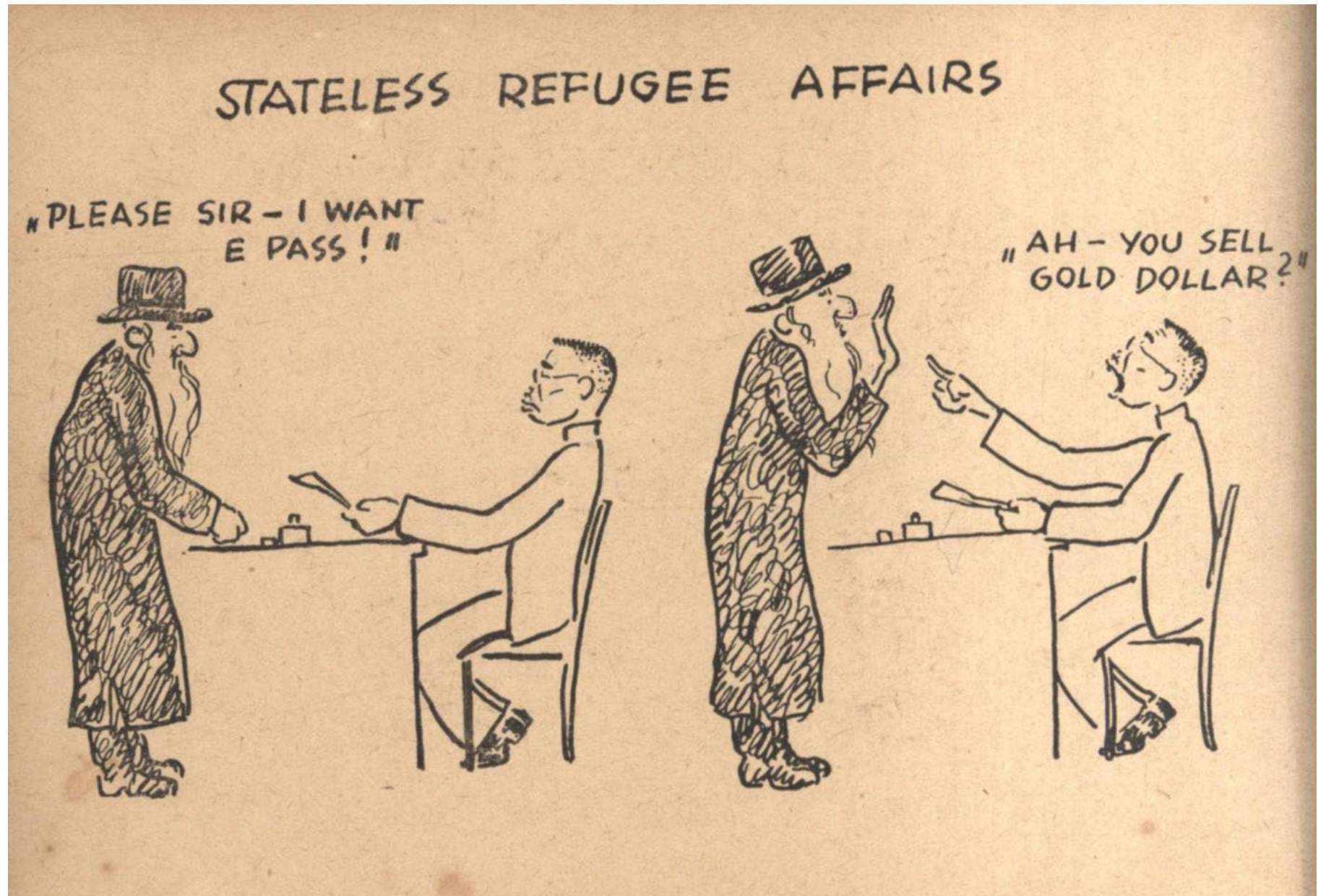




# 上海の租界時代資料集：その他 1853-1945年 より

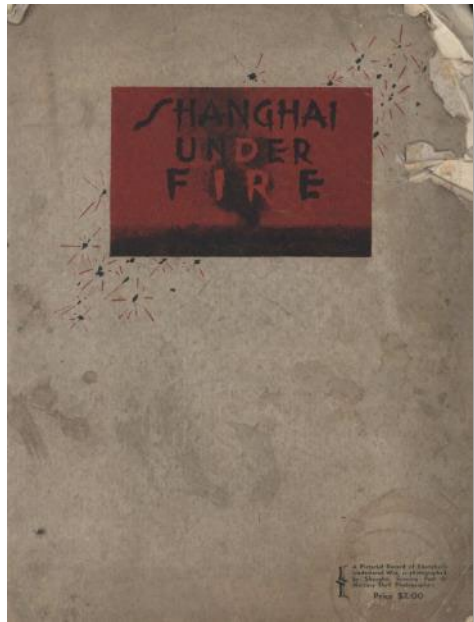


Paula Eskelund Schiff. *Squeezing Through! Shanghai Sketches 1941-1945*. Hwa Kuo Printing Co., 1941-1945. Archives Unbound, [link.gale.com/apps/doc/XHXYEU728372100/GDSC?u=asiademo&sid=bookmark-GDSC&xid=50923db1&pg=23](http://link.gale.com/apps/doc/XHXYEU728372100/GDSC?u=asiademo&sid=bookmark-GDSC&xid=50923db1&pg=23).

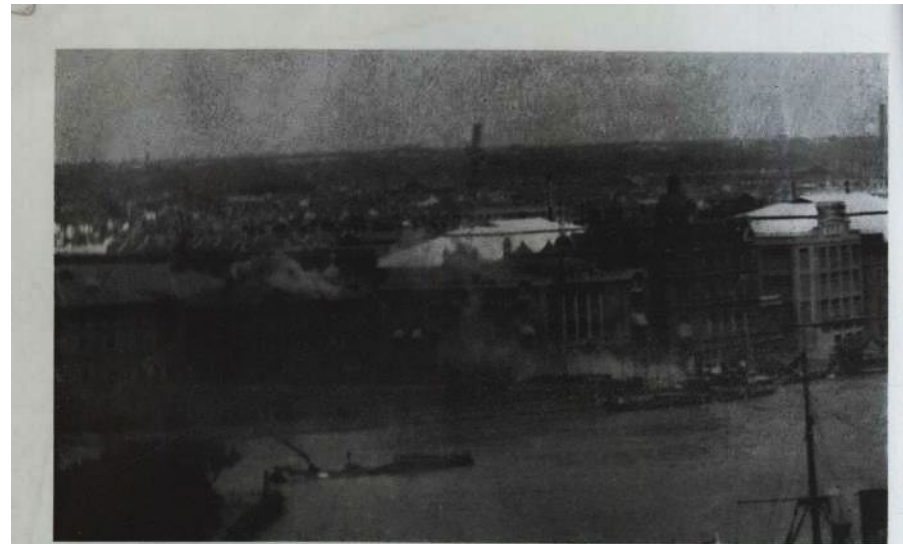




# 上海の租界時代資料集：その他 1853-1945年 より



Shanghai under Fire. The Post Mercury Co., Federal Inc. U.S.a, n.d. Archives Unbound, [link.gale.com/apps/doc/XILEDP964517153/GDSC?u=asiademo&id=bookmark-GDSC&xid=dd8b9ba4&pg=1](https://link.gale.com/apps/doc/XILEDP964517153/GDSC?u=asiademo&id=bookmark-GDSC&xid=dd8b9ba4&pg=1).



CHINESE artillerymen finally find their mark and register a direct hit on the Japanese Consulate Building. Several more hits were scored in the course of the duel. The lower photo shows the H.I.J.M.S. Izumo anchored in midstream and blasting away at Pootung.



CIVILIAN life is paying dearly for this undeclared war. Upper: a young Chinese girl of the poorer class "killed in action" in the Hongkew area, just one of the thousands of civilians dead. Right: a crater caused by one of the Japanese bombs dropped at the South Station. Lower: Chinese boy scouts are doing a man-sized job in caring for wounded civilians and removing the dead. These gallant youngsters even travel to the front on Red Cross vans to bring in wounded soldiers.



Photo



# 上海共同租界工部局年報・各部門報告書・納税人会議録・ほか 1867-1941年

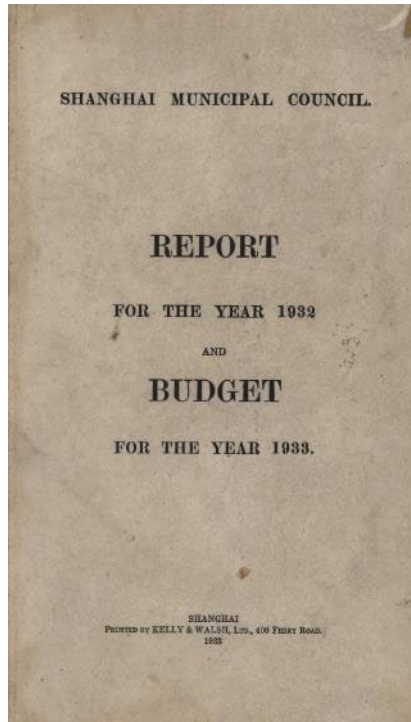
## SHANGHAI INTERNATIONAL SETTLEMENT: SHANGHAI MUNICIPAL COUNCIL REPORTS, MINUTES OF RATEPAYERS MEETINGS, AND SHANGHAI VOLUNTEER CORPS, 1867-1941

- 本コレクションは、上海共同租界工部局の年次報告書、予算報告書、各部局報告書、納税者会議録等を提供します。
- 上海工部局は上海共同租界の公的統治機関として1854年に創設されました。工部局の下には、警察、電力、公衆衛生、公共事業を統括する部門が置かれ、電気、ガス、水道、交通等の公共事業の大半を統括しました。アヘン売買や売春も1910年代末に違法とされるまでは、工部局の管轄下に置かれていました。工部局員と議長は納税人会議の投票で選出されました。



- 収録年代: 1867-1941
- 原本: 上海古籍出版社 (上海図書館)
- ページ数: 28,431

# 上海共同租界工部局年報・各部門報告書・納税人会議録・ほか より



Shanghai Municipal Council. Report for the Year 1932 and Budget for the Year 1933. Kelly & Walsh, Ltd., 1933. Archives Unbound, [link.gale.com/apps/doc/XCVLFX612536837/GDSC?u=asiademo&sid=bookmark-GDSC&xid=8d737175&pg=27](https://link.gale.com/apps/doc/XCVLFX612536837/GDSC?u=asiademo&sid=bookmark-GDSC&xid=8d737175&pg=27).

Annual Report of the Shanghai Municipal Council, 1932. 15

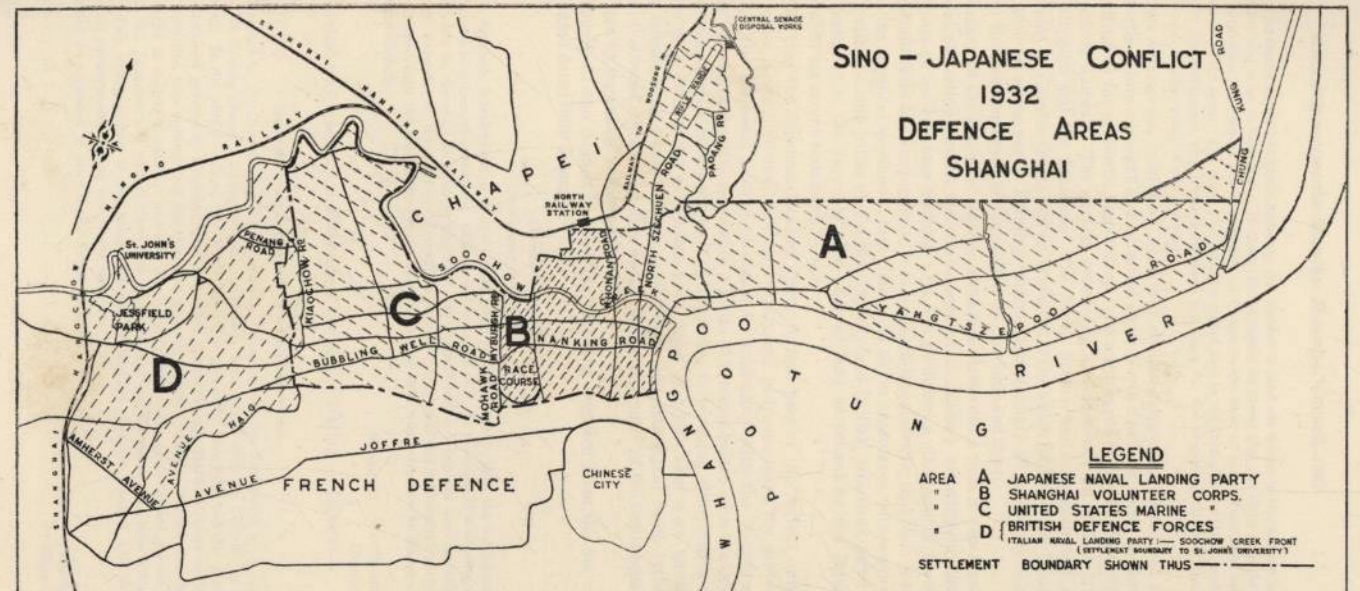
## SINO-JAPANESE CONFLICT.

During 1932 the Council was faced with and successfully weathered one of the most serious crises in its history. The armed conflict between the Chinese and the Japanese on the northern borders of the Settlement, the intense feeling thus engendered between the two largest sections of the community, and the problems connected with the defence of the Settlement, the maintenance of the administration and police control, the care of vast numbers of refugees and generally the adaptation to circumstances and the challenges to the fullest extent the government in the Settlement.

The public nobly responded to the services, and gave its solid and steadfast problems of rehabilitation. The complaints at the close of the year are a tribute to the unity and determination of its people and prosperity of the community in the

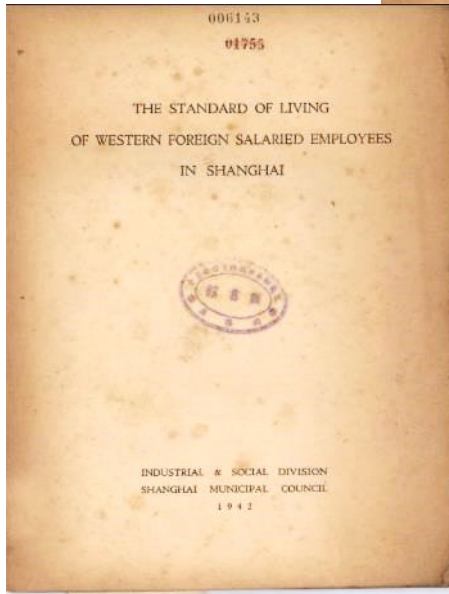
During the latter part of 1931 Chinese and the Japanese owing to the boycott campaign fostered by the various Chinese commercial organisations active in the Shanghai district, and the Settlement. Chinese residents of the were illegally arrested, fined and imprisoned of the Queen of Heaven, a building which is exempt from Council control. It was manufacture to the value of over \$600 seized and detained. These and similar of law and order, and the failure of the complete collapse of the administration to offences connected with anti-Japanese

Hostile incidents and derogatory in the latter months of 1931 caused a feeling of such bitter hostility that a clash seemed to be imminent. The incidents directly leading up to the armed conflict which lasted from May 1932 to January 1933, when a party of





# 上海共同租界工部局年報・各部門報告書・納税人会議録・ほか より



The Standard of Living of Western Foreign Salaried Employees in Shanghai. N.p., 1942. Archives Unbound, [link.gale.com/apps/doc/XINAVW182648377/GDSC?u=asiademo&sid=bookmark-GDSC&id=b44dd135&pg=67](http://link.gale.com/apps/doc/XINAVW182648377/GDSC?u=asiademo&sid=bookmark-GDSC&id=b44dd135&pg=67).

TABLE XXIII. AVERAGE QUANTITIES OF AND PER CONSUMPTION UNIT

| ITEMS   | Unit | Size of unit | AMERICAN         |                      |               |                      |
|---|------|--------------|------------------|----------------------|---------------|----------------------|
|   |      |              | Average quantity |                      | Average value |                      |
|   |      |              | Per family       | Per consumption unit | Per family    | Per consumption unit |
| CONSUMPTION EXPENDITURE + NON-CONSUMPTION OUTGO           |      |              |                  |                      | \$            | \$                   |
| I. CONSUMPTION EXPENDITURE                                |      |              |                  |                      | 1,864.53      | 653.70               |
| A. FOOD   |      |              |                  |                      | 1,862.32      | 652.88               |
| 1. Cereals  |      |              |                  |                      | 407.22        | 133.95               |
| a. Bread  |      |              |                  |                      | 42.44         | 13.96                |
| b. Cakes, biscuits, pastry                                |      |              | 18.45            | 6.07                 | 9.02          | 2.97                 |
| c. Flour  |      |              | 21.88            | 7.20                 | 8.07          | 2.65                 |
| d. Other cereals  |      |              |                  |                      | 7.39          | 2.43                 |
| (i) Macaroni  |      |              |                  |                      | 17.96         | 5.91                 |
| (ii) Rice   |      |              | 1.21             | 0.40                 | 0.80          | 0.26                 |
| (iii) Others  |      |              | 21.35            | 7.02                 | 7.10          | 2.34                 |
| 2. Meat, fish, etc.                                       |      |              |                  |                      | 10.06         | 3.31                 |
| a. Beef, fresh (including frozen and chilled)             |      |              |                  |                      | 55.82         | 18.36                |
| b. Pork, fresh  |      |              | 15.52            | 5.11                 | 17.30         | 5.69                 |
| c. Mutton, fresh  |      |              | 4.45             | 1.46                 | 4.20          | 1.38                 |
| d. Veni, fresh  |      |              | 3.02             | 0.99                 | 3.21          | 1.06                 |
| e. Other meats  |      |              | 0.23             | 0.07                 | 0.38          | 0.12                 |
| (i) Minced meat   |      |              |                  |                      | 2.46          | 0.81                 |
| (ii) Liver, kidney, sweetbread, etc.                      |      |              | 0.50             | 0.16                 | 0.43          | 0.14                 |
| f. Ham and bacon  |      |              | 2.68             | 0.88                 | 2.03          | 0.67                 |
| g. Sausages   |      |              | 5.40             | 1.78                 | 3.85          | 1.29                 |
| h. Other preserved meat (salted, smoked, canned or dried) |      |              | 1.29             | 0.42                 | 1.72          | 0.57                 |
| i. Fish and other aqua-products                           |      |              |                  |                      | 1.40          | 0.46                 |
| (i) Fresh fish  |      |              |                  |                      | 4.78          | 1.57                 |
| (ii) Salted, smoked, canned and dried fish                |      |              | 4.11             | 1.35                 | 2.34          | 0.77                 |
| (iii) Oysters, lobsters, shrimps, crabs, etc.             |      |              |                  |                      | 1.36          | 0.45                 |
| j. Poultry, game, etc.                                    |      |              |                  |                      | 1.08          | 0.35                 |
| (i) Poultry   |      |              |                  |                      | 11.52         | 3.79                 |
| (ii) Game   |      |              | 8.13             | 2.67                 | 9.65          | 3.17                 |
| (iii) Others (frogs, etc.)                                |      |              |                  |                      | 1.79          | 0.59                 |
| 3. Fats and margarine (excluding butter)                  |      |              |                  |                      | 0.08          | 0.03                 |
| a. Animal fats  |      |              |                  |                      | 18.23         | 6.00                 |
| b. Margarine  |      |              | 3.92             | 1.29                 | 3.69          | 1.21                 |
| c. Vegetable fats and oils                                |      |              | 5.84             | 1.92                 | 9.69          | 3.19                 |
| 4. Milk, milk products and eggs                           |      |              |                  |                      | 4.85          | 1.60                 |
| a. Milk, fresh  |      |              |                  |                      | 99.63         | 32.77                |
| b. Other milk   |      |              | 70.51            | 23.19                | 48.29         | 16.88                |
| (i) Evaporated milk                                       |      |              |                  |                      | 11.67         | 3.84                 |
| (ii) Dried milk   |      |              | 13.86            | 4.56                 | 9.62          | 3.16                 |
| (iii) Butter milk   |      |              | 0.28             | 0.09                 | 1.72          | 0.57                 |
| c. Cream  |      |              |                  |                      | 0.33          | 0.11                 |
| d. Cheese   |      |              | 0.92             | 0.30                 | 2.90          | 0.95                 |
| e. Butter   |      |              | 1.39             | 0.45                 | 5.07          | 1.67                 |
|   |      |              | 2.32             | 0.76                 | 12.06         | 4.30                 |

EXPENDITURES ON VARIOUS ITEMS PER FAMILY PER MONTH BY NATIONALITY.

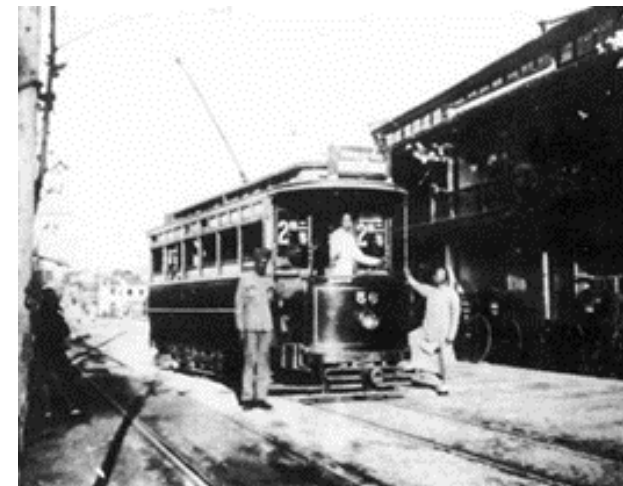
| BRITISH          |                      |               |                      | RUSSIAN          |                      |               |                      | OTHER NATIONALITIES |                      |               |                      |
|------------------|----------------------|---------------|----------------------|------------------|----------------------|---------------|----------------------|---------------------|----------------------|---------------|----------------------|
| Average quantity |                      | Average value |                      | Average quantity |                      | Average value |                      | Average quantity    |                      | Average value |                      |
| Per family       | Per consumption unit | Per family    | Per consumption unit | Per family       | Per consumption unit | Per family    | Per consumption unit | Per family          | Per consumption unit | Per family    | Per consumption unit |
|                  |                      | \$            | \$                   |                  |                      | \$            | \$                   |                     |                      | \$            | \$                   |
|                  |                      | 1,056.32      | 459.12               |                  |                      | 599.97        | 201.92               |                     |                      | 1,022.66      | \$11.80              |
|                  |                      | 1,056.07      | 459.01               |                  |                      | 599.72        | 201.83               |                     |                      | 1,020.81      | \$11.22              |
|                  |                      | 306.76        | 128.35               |                  |                      | 190.12        | 59.97                |                     |                      | 286.77        | \$4.59               |
|                  |                      | 33.81         | 14.15                |                  |                      | 23.45         | 8.97                 |                     |                      | 44.39         | 13.10                |
| 20.47            | 8.56                 | 9.68          | 4.05                 | 47.21            | 14.89                | 15.34         | 4.84                 | 42.62               | 12.57                | 15.94         | 4.70                 |
|                  |                      | 9.62          | 4.03                 |                  |                      | 4.93          | 1.55                 |                     |                      | 10.02         | 2.96                 |
| 8.87             | 3.71                 | 3.42          | 1.43                 | 7.74             | 2.44                 | 3.24          | 1.02                 | 5.47                | 1.61                 | 1.98          | 0.59                 |
|                  |                      | 11.09         | 4.64                 |                  |                      | 4.94          | 1.56                 |                     |                      | 16.45         | 4.85                 |
| 1.27             | 0.53                 | 0.80          | 0.33                 | 1.14             | 0.36                 | 0.74          | 0.23                 | 2.38                | 0.70                 | 1.64          | 0.48                 |
| 10.85            | 4.54                 | 4.25          | 1.78                 | 6.91             | 2.18                 | 2.22          | 0.70                 | 34.76               | 10.25                | 11.50         | 3.39                 |
|                  |                      | 6.04          | 2.53                 |                  |                      | 1.98          | 0.63                 |                     |                      | 3.31          | 0.98                 |
|                  |                      | 50.44         | 21.10                |                  |                      | 46.22         | 14.58                |                     |                      | 69.07         | 20.37                |
| 14.85            | 6.21                 | 14.79         | 6.19                 | 20.87            | 6.58                 | 17.25         | 5.44                 | 21.60               | 6.37                 | 21.24         | 6.26                 |
| 4.27             | 1.79                 | 3.95          | 1.65                 | 4.96             | 1.56                 | 5.01          | 1.58                 | 11.64               | 3.43                 | 11.45         | 3.38                 |
| 4.00             | 1.69                 | 4.30          | 1.80                 | 0.46             | 0.14                 | 0.46          | 0.14                 | 3.22                | 0.95                 | 3.38          | 1.09                 |
| 0.23             | 0.10                 | 0.40          | 0.17                 |                  |                      |               |                      | 0.15                | 0.04                 | 0.28          | 0.08                 |
|                  |                      | 2.80          | 1.17                 |                  |                      | 5.63          | 1.78                 |                     |                      | 5.04          | 1.48                 |
| 0.93             | 0.40                 | 0.75          | 0.31                 | 2.92             | 0.92                 | 2.33          | 0.74                 | 2.24                | 0.66                 | 1.88          | 0.55                 |
| 2.70             | 1.18                 | 2.05          | 0.86                 | 4.96             | 1.56                 | 3.30          | 1.04                 | 4.15                | 1.22                 | 3.16          | 0.93                 |
| 3.08             | 1.29                 | 4.89          | 2.05                 | 1.05             | 0.33                 | 1.88          | 0.59                 | 2.35                | 0.69                 | 4.01          | 1.18                 |
| 1.98             | 0.83                 | 2.47          | 1.02                 | 2.99             | 0.94                 | 3.75          | 1.19                 | 3.32                | 0.98                 | 4.11          | 1.21                 |
|                  |                      | 1.29          | 0.54                 |                  |                      | 0.04          | 0.01                 |                     |                      | 1.75          | 0.52                 |
|                  |                      | 7.57          | 3.17                 |                  |                      | 6.24          | 1.97                 |                     |                      | 6.54          | 1.93                 |
| 7.40             | 3.10                 | 4.39          | 1.84                 | 7.53             | 2.38                 | 3.96          | 1.25                 | 6.26                | 1.85                 | 3.71          | 1.09                 |
|                  |                      | 2.16          | 0.90                 |                  |                      | 1.44          | 0.45                 |                     |                      | 1.56          | 0.46                 |
|                  |                      | 1.02          | 0.43                 |                  |                      | 0.84          | 0.27                 |                     |                      | 1.27          | 0.38                 |
|                  |                      | 7.98          | 3.34                 |                  |                      | 5.96          | 1.88                 |                     |                      | 11.27         | 3.33                 |
| 5.81             | 2.43                 | 6.55          | 2.74                 | 4.88             | 1.54                 | 5.55          | 1.75                 | 8.51                | 2.51                 | 9.85          | 2.91                 |
|                  |                      | 1.42          | 0.59                 |                  |                      | 0.41          | 0.13                 |                     |                      | 1.40          | 0.41                 |
|                  |                      | 0.01          | 0.01                 |                  |                      |               |                      |                     |                      | 0.02          | 0.01                 |
|                  |                      | 11.12         | 4.65                 |                  |                      | 8.78          | 2.77                 |                     |                      | 12.99         | 3.83                 |
| 3.31             | 1.38                 | 3.16          | 1.32                 | 3.97             | 1.25                 | 3.83          | 1.21                 | 4.43                | 1.31                 | 4.29          | 1.27                 |
| 3.30             | 1.60                 | 5.69          | 2.38                 | 1.07             | 0.34                 | 1.93          | 0.61                 | 3.78                | 1.12                 | 6.68          | 1.97                 |
| 1.44             | 0.60                 | 2.27          | 0.95                 | 1.98             | 0.62                 | 3.02          | 0.95                 | 1.33                | 0.39                 | 2.02          | 0.59                 |
|                  |                      | 65.27         | 27.31                |                  |                      | 35.78         | 11.29                |                     |                      | 54.85         | 16.17                |
| 38.35            | 16.05                | 26.28         | 10.99                | 27.08            | 8.54                 | 12.51         | 3.95                 | 37.69               | 11.12                | 17.46         | 5.15                 |
|                  |                      | 10.46         | 4.38                 |                  |                      | 5.26          | 1.66                 |                     |                      | 9.86          | 2.91                 |
| 13.13            | 5.49                 | 9.35          | 3.91                 | 6.60             | 2.08                 | 4.36          | 1.33                 | 10.47               | 3.09                 | 7.32          | 2.16                 |
| 0.18             | 0.08                 | 1.11          | 0.47                 | 0.14             | 0.04                 | 0.87          | 0.27                 | 0.39                | 0.12                 | 2.44          | 0.72                 |
|                  |                      |               |                      |                  |                      | 0.03          | 0.01                 |                     |                      | 0.10          | 0.03                 |
| 0.41             | 0.17                 | 1.26          | 0.53                 | 0.60             | 0.19                 | 1.96          | 0.62                 | 0.37                | 0.11                 | 1.30          | 0.38                 |
| 1.05             | 0.44                 | 4.07          | 1.70                 | 0.72             | 0.23                 | 1.73          | 0.55                 | 0.61                | 0.18                 | 2.38          | 0.70                 |
| 2.69             | 0.97                 | 11.48         | 4.80                 | 1.03             | 0.32                 | 5.70          | 1.80                 | 2.00                | 0.59                 | 11.03         | 3.25                 |



# 上海共同租界：都市計画と開発 1845-1948年

## SHANGHAI INTERNATIONAL SETTLEMENT: URBAN PLANNING AND DEVELOPMENT, 1845–1948

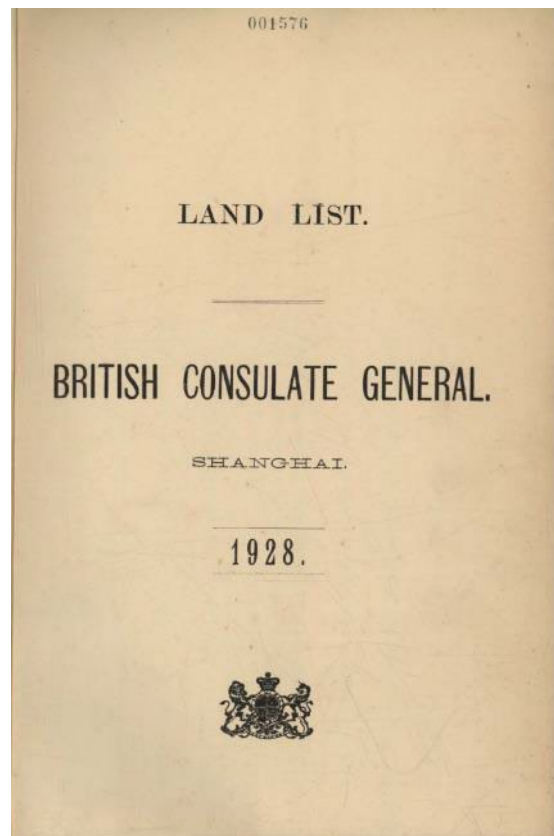
- 本コレクションは、上海共同租界における土地の利用と開発に関する文書群です。
- 具体的には、地価告示書 (Land Assessment Schedules, 1869-1933)、土地リスト (Land Lists, 1871-1937)、土地貸借、建築物や道路の施工、不動産関係の税制に関する規則を定めた土地章程・条例集 (Land Regulations and Byelaws, 1845-1930) のほか、上海の様々な公共事業体の運営と管理を定める規則や報告に関する文書群です。
- これらの公共事業体の大半は工部局の関連企業でした。収録文書の中には、港湾、造船、貿易、鉄道等、上海共同租界のインフラに関する貴重な文書が収録されています。



- 収録年代: 1845-1948
- 原本: 上海古籍出版社 (上海図書館)
- ページ数: 11,000以上



# 上海共同租界：都市計画と開発 1845-1948年 より



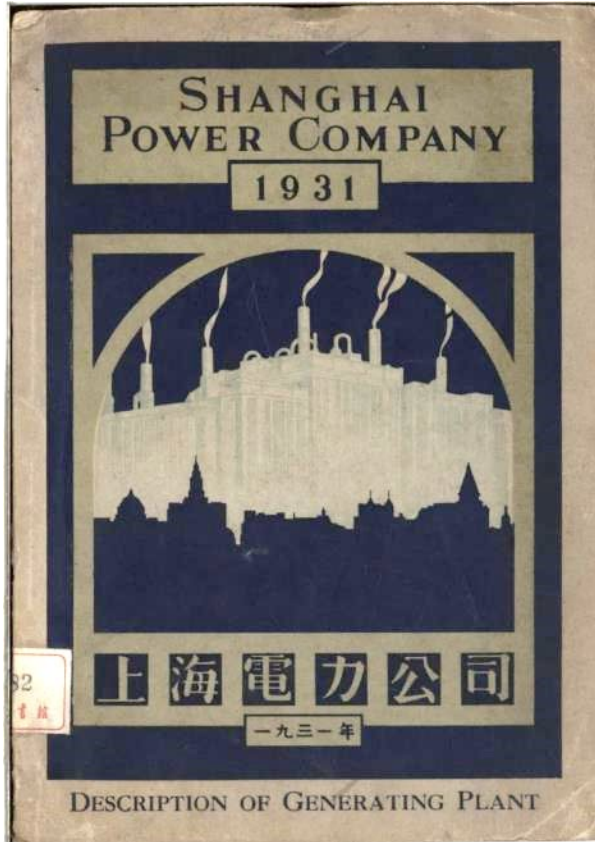
Land List. British Consulate General. Shanghai. 1928. N.p., 1928. Archives Unbound, [link.gale.com/apps/doc/XENRTC897366498/GDS?u=asiademo&sid=bookmark-GDSC&xid=1acc0d62&pg=133](https://link.gale.com/apps/doc/XENRTC897366498/GDS?u=asiademo&sid=bookmark-GDSC&xid=1acc0d62&pg=133).

109

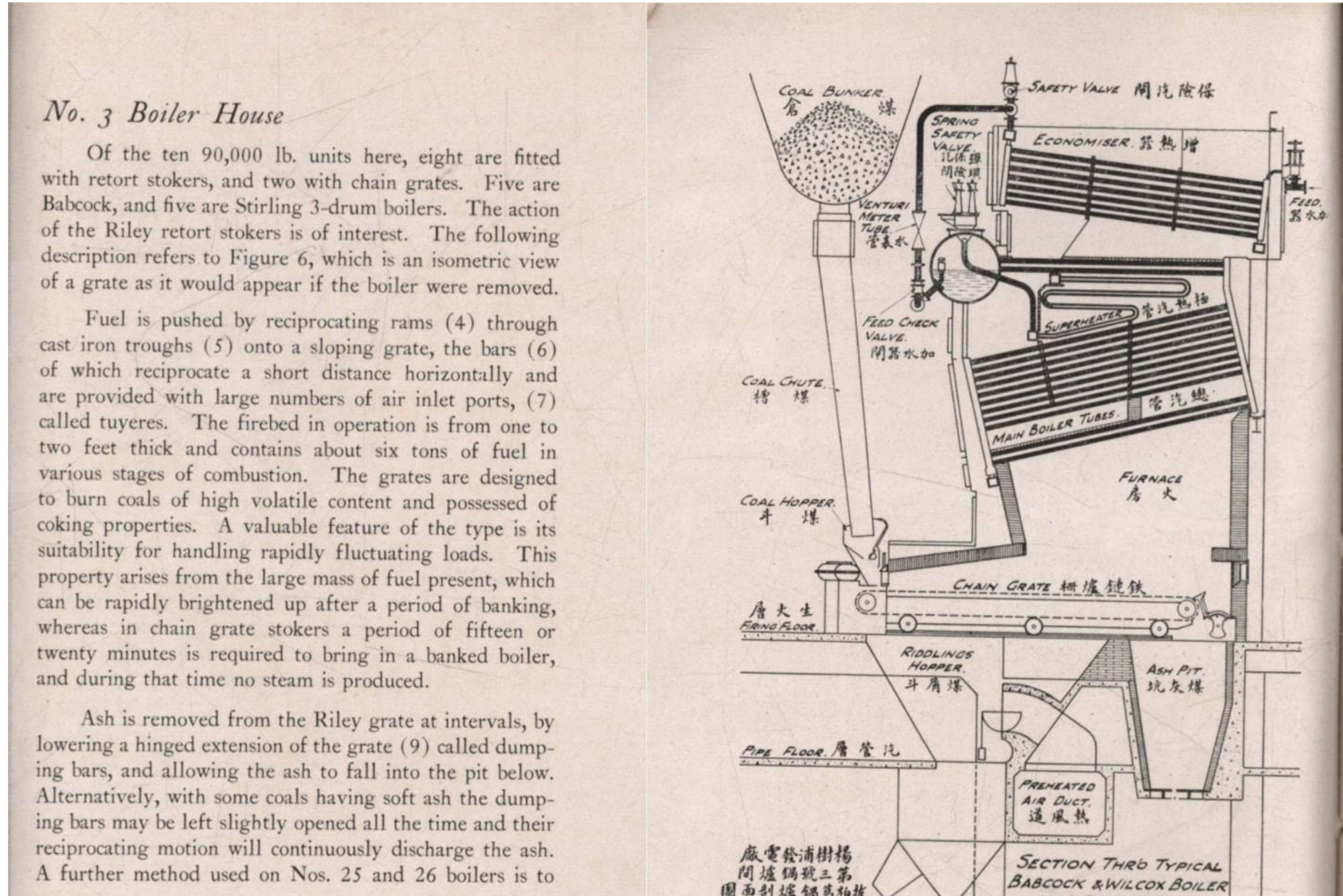
| RENTER                     | Lot No. | District.   | Cadastral No. | Area.              | Government Ground Rent. |
|----------------------------|---------|-------------|---------------|--------------------|-------------------------|
|                            |         |             |               | <i>m. f. l. h.</i> |                         |
| Sassoon, E. D. & Co., Ltd. | 9667    | Nantow      | .....         | 22 8 5 7           | 34,286                  |
| do                         | 10012   | W. of W. D. | .....         | 9 5 6              | 1,434                   |
| do                         | 10493   | W. D.       | 4512          | 46 9 8 2           | 70,473                  |
| do                         | 11314   | Fr. S.      | 6020          | 1 8 2 4            | 2,736                   |
| do                         | 11392   | W. D.       | 4308          | 1 9 5 0            | 2,925                   |
| do                         | 11393   | do          |               | 1 4 2 0            | 2,130                   |
| Sassoon, F.                | 3971    | do          | 1755          | 1 9 4 2            | 2,913                   |
| do                         | 3972    | Fr. S.      | .....         | 2 6 5 2            | 3,978                   |
| do                         | 4815    | W. D.       | 1740          | 1 6 7 7            | 2,516                   |
| Sassoon, M.                | 148     | C. D.       | 539 551       | 3 4 3 4            | 5,151                   |
| do                         | 237     | do          | 428           | 2 4 7 9            | 3,719                   |
| do                         | 259     | do          | 539§          | 6 8 0 0            | 10,200                  |
| do                         | 275     | do          | 539§          | 3 0 8 6            | 4,602                   |
| do                         | 279     | do          | 539§          | 2 3 0 0            | 3,450                   |
| do                         | 302     | do          | 535           | 4 7 3 2            | 7,098                   |
| do                         | 1001    | do          | 211           | 16 0 1 6           | 24,024                  |
| do                         | 1002    | do          | 190           | 3 5 4 3            | 5,315                   |
| do                         | 1387    | do          | 663           | 2 7 9 1            | 4,187                   |
| do                         | 1396    | do          | 692           | 6 6 6 0            | 9,990                   |
| do                         | 1551    | N. D.       | 687           | 2 8 7 8            | 4,317                   |
| do                         | 1841    | C. D.       | 209           | 3 1 2 8            | 4,692                   |
| do                         | 1842    | do          | 239           | 1 4 8 8            | 2,232                   |
| Sassoon, R. E.             | 3729    | E. D.       | 2040          | 3 1 0 9            | 4,664                   |
| do                         | 3791    | do          | 274           | 1 0 1 5            | 1,523                   |
| do                         | 4989    | do          | 334           | 3 3 3 5            | 5,003                   |
| do                         | 6783    | do          | 2040          | 2 2 8 1            | 3,422                   |
| do                         | 7209    | Fr. S.      | 366           | 4 0 8 7            | 6,131                   |
| do                         | 8973    | N. D.       | 915           | 1 1 0 0            | 1,650                   |



# 上海共同租界：都市計画と開発 1845-1948年 より



Shanghai Power Co. Description of Generating Plant with Some Notes on the History of Electricity Supply in the International Settlement 1931. 1931. Archives Unbound, [link.gale.com/apps/doc/XEOEPA414617754/GDSC?u=asiademo&sid=bookmark-GDSC&xid=fb5a3e10&pg=31](http://link.gale.com/apps/doc/XEOEPA414617754/GDSC?u=asiademo&sid=bookmark-GDSC&xid=fb5a3e10&pg=31).





# 中国海関職員録 および 黄浦河道局・上海港報告集 1890-1943年

## SERVICE LISTS AND REPORTS OF THE CHINESE MARITIME CUSTOMS SERVICE AND WHANGPOO CONSERVANCY BOARD

- 本コレクションは、黄浦河道局の報告書、黄浦河道局設立以前に中国海関により作成された航路改修に関する報告書、そして海関職員の氏名や職務を記載した名簿(Service List)を提供します。
- 長江はその河口付近に堆積する砂泥は、船舶の航行にとって大きな自然の障害となっていました。イギリスをはじめとする列強は、上海を拠点に貿易を拡大するために航路の改修を進めようとしませんが、浅瀬を天然の要害と考える清朝政府との間に利害の大きな隔たりがあり、航路改修作業を軌道に乗せることはできませんでした。
- しかし、義和団事件後に列強と清朝の間で調印された北京議定書の付属条項に「黄浦江航路の改善に関する規定」が盛り込まれるに及び、航路改修事業はようやく進捗します。この規定に基づき、1905年に黄浦河道局(Whangpoo Conservancy Board)が設立され、上海道台と上海税務司の共同管理下に置かれました。黄浦河道局は上海港に関する各種報告書を編纂し刊行しました。



- 収録年代: 1890-1943
- 原本: 上海古籍出版社 (上海図書館)
- ページ数: 9,200以上

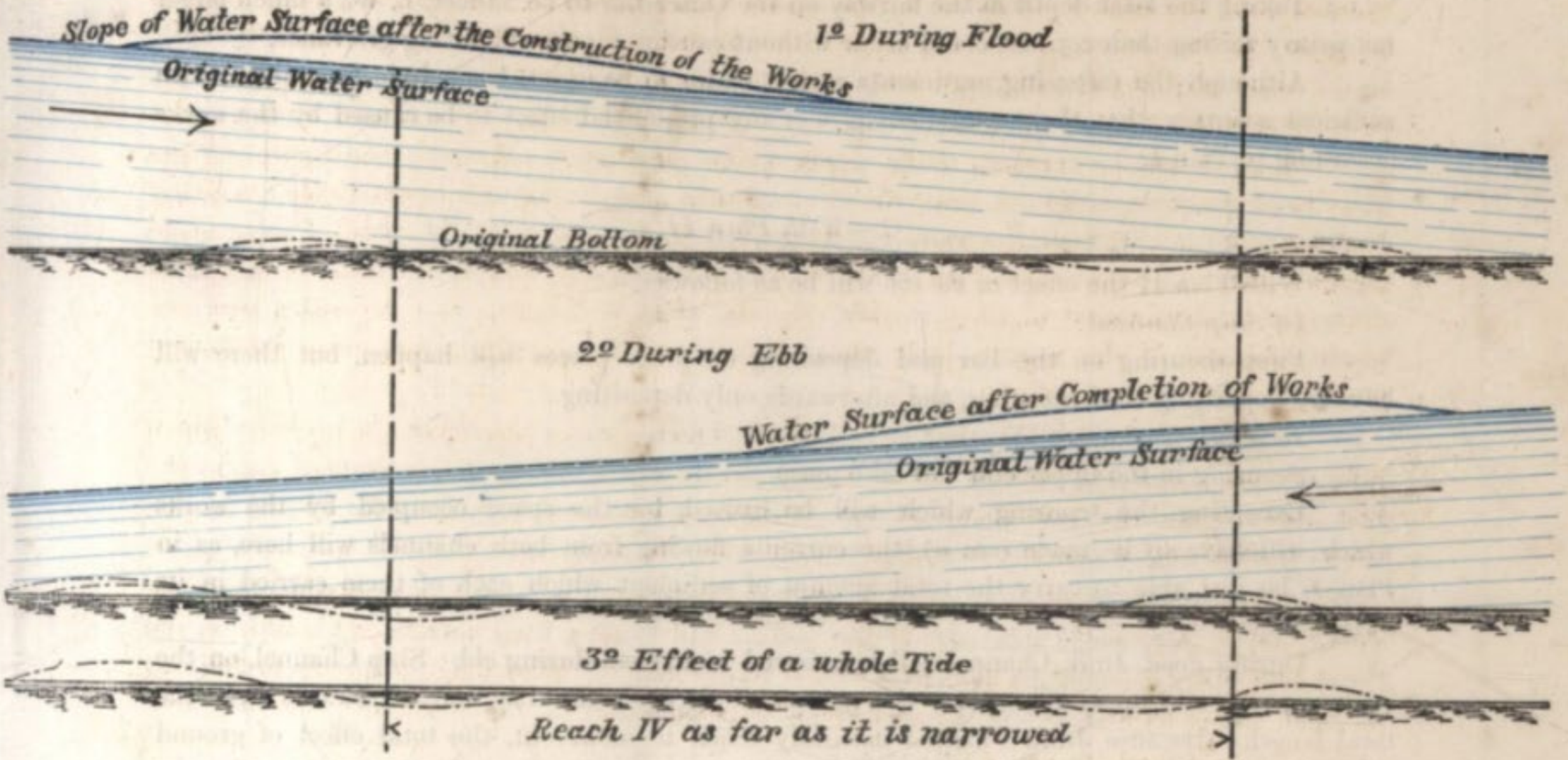
Inspector General. 總稅務司

|                      |     |              |                |                |         |
|----------------------|-----|--------------|----------------|----------------|---------|
| Aglen, F. A. . . . . | 安格聯 | British .... | 1888, Dec. ... | 1911, Oct. ... | Peking. |
|----------------------|-----|--------------|----------------|----------------|---------|

Commissioners. 稅務司

|                                      |     |              |                |                |                              |
|--------------------------------------|-----|--------------|----------------|----------------|------------------------------|
| Carl, F. A. . . . .                  | 柯爾樂 | American..   | 1881, Dec. ... | 1889, March    | Antung and<br>Tatungkow.     |
| Unwin, F. S. . . . .                 | 安文  | British .... | 1868, Sept. .. | 1897, Feb. ... | Hankow.                      |
| Tanner, P. de <sup>1</sup> . . . . . | 單爾  | Russian ...  | 1881, June...  | 1899, Jan. ... | Soochow.                     |
| King, P. H. <sup>2</sup> . . . . .   | 慶丕  | British .... | 1874, Jan. ... | 1900, April..  | London.                      |
| Oiesen, J. F. <sup>3</sup> . . . . . | 歐森  | Danish.....  | 1877, July...  | „ May...       | Shanghai.                    |
| Bowra, C. A. V. . . . .              | 包羅  | British .... | 1886, Oct. ... | 1903, March    | † (S.U.L.)                   |
| Lay, W. G. . . . .                   | 李蔚良 | „ ....       | 1880, Nov. ..  | 1905, Oct. ... | Lappa.                       |
| Maze, F. W. . . . .                  | 梅樂和 | „ ....       | 1891, Dec. ... | 1906, July...  | Tientsin and<br>Chinwangtao. |
| Brewitt-Taylor, C. H. . . . .        | 鄧羅  | „ ....       | Nov. ...       | 1908, Jan. ... | † (S.U.L.)                   |





..... First excavation and deposit.



| DEPTH UNDER L. W. IN FEET. | a. On the Woosung Bar and in the line of the Beacon Poles. |                                      |   |                                  |   |                                  | b. On other Places.   |                                       |   |                        |  |                        |                                     |                       |
|----------------------------|--|--------------------------------------|---|----------------------------------|---|----------------------------------|---|---------------------------------------|---|------------------------|--|------------------------|-------------------------------------|-----------------------|
|                            | M.   |                                      | L.  |                                  | K.  |                                  | I.  |                                       | H.  |                        | A.   |                        | Between A and B.                    |                       |
|                            | Kind of Earth.   | Remarks.                             | Character of Stuff.                       | Remarks.                         | Character of Stuff.   | Remarks.                         | Character of Stuff.   | Remarks.                              | Character of Stuff.   | Remarks.               | Character of Stuff.                                | Remarks.               | Character of Stuff.                 | Remarks.              |
| 0                          |  |                                      |   |                                  |   |                                  |   |                                       |   |                        |  |                        |                                     |                       |
| 1                          |  |                                      |   |                                  |   |                                  |   |                                       |   |                        |  |                        |                                     |                       |
| 2                          |  |                                      |   |                                  |   |                                  |   |                                       |   |                        |  |                        |                                     |                       |
| 3                          |  |                                      |   |                                  |   |                                  |   |                                       |   |                        |  |                        |                                     |                       |
| 4                          |  |                                      |   |                                  |   |                                  |   |                                       |   |                        |  |                        |                                     |                       |
| 5                          |  |                                      |   |                                  |   |                                  |   |                                       |   |                        |  |                        |                                     |                       |
| 6                          |  |                                      |   |                                  |   |                                  |   |                                       |   |                        |  |                        |                                     |                       |
| 7                          |  |                                      |   |                                  |   |                                  |   |                                       |   |                        |  |                        |                                     |                       |
| 8                          |  |                                      |   |                                  |   |                                  |   |                                       |   |                        |  |                        |                                     |                       |
| 9                          |  |                                      |   |                                  |   |                                  |   |                                       |   |                        |  |                        |                                     |                       |
| 10                         |  |                                      |   |                                  |   |                                  |   |                                       |   |                        |  |                        |                                     | Bottom.               |
| 11                         | Soft stuff washed out of the borer.                        | Pressed in by hand with two men.     | Soft stuff washed out of the borer.       | Pressed in by hand with two men. | Soft stuff washed out of the borer.   | Driven in easily in little time. | Soft stuff washed out of the borer.   | Pressed in by hand with two men.      | Soft stuff washed out of the borer.   | Pressed in by two men. | Soft stuff washed out of the borer.                | Pressed in by two men. | Soft stuff washed out of the borer. | Bottom.               |
|                            | (2) Fine sand coherent by clay particles.                  | The last foot driven in by 20 blows. | (3) Fine sand coherent by clay particles. | Driven in by 40 blows.           | (4) Fine sand in the upper part more coherent by clay particles than lower. |                                  | (4) A little less fine sand as L, but (3) of the same cohesion by clay particles. (2) (1) | Driven in by 50 blows or by 60 blows. | (4) Fine sand in the upper part more coherent by clay particles than lower. (3) (2) (1) | Driven in.             | (2) Very fine sand coherent by clay particles. (1) |                        | All of the stuff washed out.        | Pushed in by two men. |

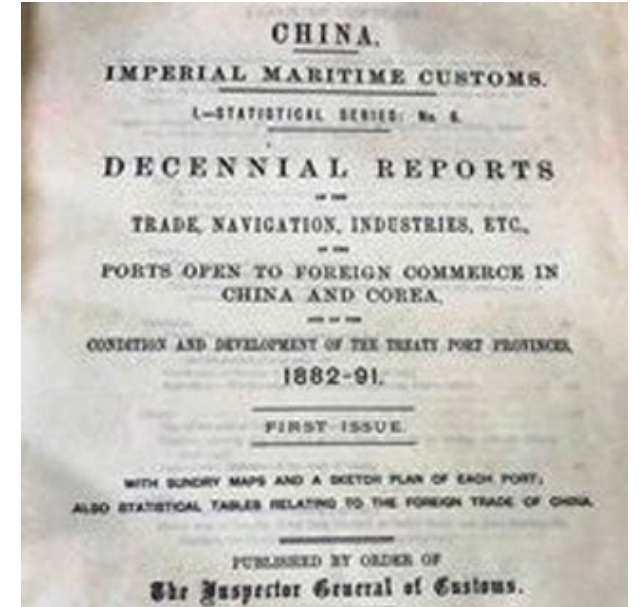
China. Imperial Maritime Customs. III.—Miscellaneous Series: No. 22. Woosung Inner Bar. With an Appendix Consisting of the Report on the Bar (1876) by Messrs G. A. Escher and Johs. De Ryke. Vol. 2, The Statistical Department of the Inspectorate General of Customs, 1894. Archives Unbound, [link.gale.com/apps/doc/XJSEWG472524704/GDSC?u=asiademo&sid=bookmark-GDSC&xid=1224d528&pg=80](http://link.gale.com/apps/doc/XJSEWG472524704/GDSC?u=asiademo&sid=bookmark-GDSC&xid=1224d528&pg=80).



# 中国海関出版物集

## CHINESE MARITIME CUSTOMS SERVICE PUBLICATIONS

- 外国人税務司制度の創設以来、中国海関は英文出版物を編纂・刊行しました。
- 本コレクションは、南京の第二歴史檔案館が所蔵する海関による出版物を収録する中国第二歴史檔案館・中国海関総署弁公庁編『中國舊海關史料(1859-1948)』全170巻(北京:京華出版社, 2001)をデジタル化したものです。
- 収録出版物は広範囲におよびますが、貿易統計が大半を占めます。言語は大半が英語ですが、中国語版も一部収録されています。19世紀半ばから20世紀半ばまでの100年間にわたる近代中国貿易史の第一級の資料です。

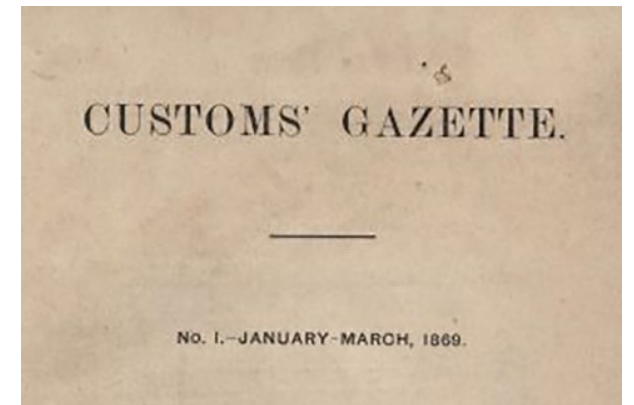


- 収録年代: 1850-1949
- 原本: 中国第二歴史檔案館
- ページ数: 約10万

# 中国海関官報 1869-1913年

## CHINESE MARITIME CUSTOMS SERVICE: *THE CUSTOMS' GAZETTE*, 1869-1913

- 本コレクションは、中国海関総稅務司の命令で発行された海関公報を収録します。
- 海関公報は上海の總稅務司により発行された季刊貿易統計で、中国各地の条約港に設置された海関徵稅所から提出された報告書を基に作成されました。輸出入、船舶、関稅收入等に関する統計と解題を収録するだけでなく、中国各地の社会經濟状態、関稅や貿易の取締、罰金、密輸品の沒收、条約港の状態などに関する情報を提供するものでもあります。
- 公報は1869年から1913年まで180号発行されましたが、本コレクションでは150号を収録します。1876年から1877年にかけての第29号から第36号、1880年の第45号と第46号、1881年から1882年の第49号から第56号、1884年の第61号から第64号、1888年から1889年の第77号から第84号は欠号で収録されていません。



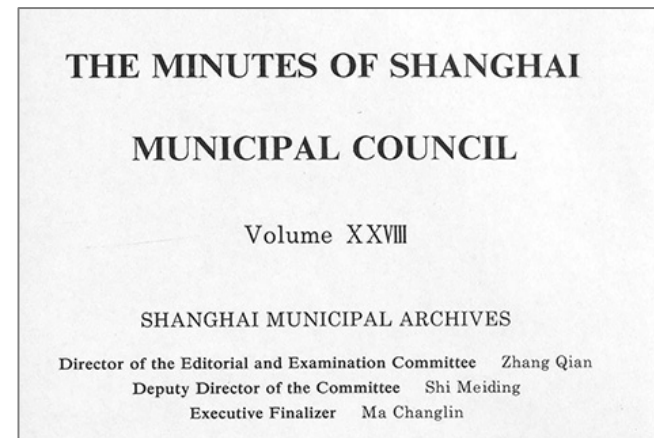
- 収録年代: 1869-1913
- 原本: 上海図書館
- ページ数: 36,700以上



# 上海市参事會議事録1854-1943年

## THE MINUTES OF THE SHANGHAI MUNICIPAL COUNCIL

- 本コレクションは工部局の政策立案機関である参事会の議事録を収録します。
- 工部局が共同租界の行政全般を管轄下に置く組織であったため、参事会が議題に上げる範囲は衛生、交通、通信、郵便、税務、都市計画、ガス供給、街灯から動物保護、警察、人力車夫の監督まで、広範囲におよびました。役員や職員の人事異動も扱われています。
- 本コレクションは工部局創設の1週間後の1854年7月17日の議事録から工部局が解散した1943年12月17日の議事録まで、約90年におよぶ参事会の記録を収録します。記録はすべて英語で書かれ、1854年7月から1906年12月までの議事録は手書き、それ以降はタイプ原稿です。

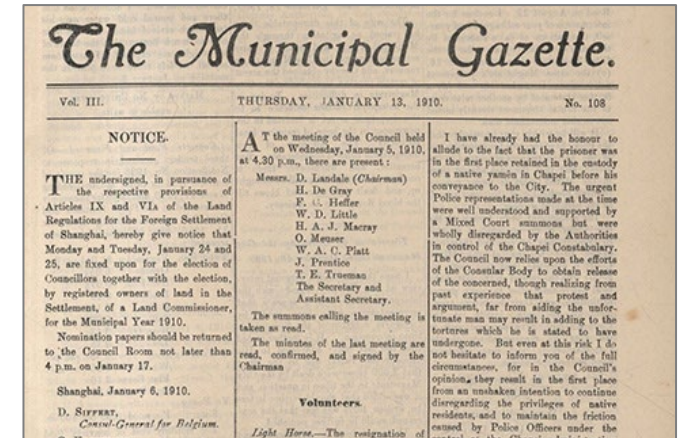


- 収録年代: 1854-1943
- 原本: 上海古籍出版社 (上海市檔案館)
- ページ数: 14,700以上

# 上海市工部局官報1908-1942年

## SHANGHAI MUNICIPAL COUNCIL: THE MUNICIPAL GAZETTE, 1908-1942

- 本コレクションは工部局の官報 The Municipal Gazette を提供します。
- 毎週金曜日に発行された官報の収録内容は、共同租界居留民への広報、理事会議事録、予算、収支報告、犯罪報告、衛生報告、消防報告等の各種報告書、工部局の政策や指令から、治安、教育、裁判、衛生、人事、公共事業入札、読者の投書まで、工部局の租界行政全般におよびました。また、人口統計、犯罪統計等、統計データが充実しているのも特徴です。
- 本コレクションは、創刊の1908年の創刊号から1942年の最終号まで完全な形で収録します。



- 収録年代: 1908-1942
- 原本: 上海図書館
- ページ数: 14,800以上



# 上海共同租界工部局警務処政治部文書集1894-1945年

## POLICING THE SHANGHAI INTERNATIONAL SETTLEMENT, 1894-1945

- 本コレクションは、工部局警察部の資料を収録します。大半の資料は、警察部特高課(Special Branch)の資料で占められています。
- 特高課は警察部の秘密調査機関として、政治デモ、ストライキ、労働争議、社会不安、国内外の破壊活動、共同租界と中国政府との紛争に関する秘密情報の収集、出版物の検閲等の任務を行っていました。特高課は秘密情報を収集する過程で様々な文書を押収し、報告書を作成しました。本コレクションにはこれら報告書、月報、年報のほか、組合活動家、共産主義者、コミンテルン工作員、救国組織の押収文書、逮捕者の尋問調書を収録します。

| SHANGHAI MUNICIPAL POLICE. 7548<br>ARREST REPORT.                      |  |
|--|--|
| CRIME REGISTER No. <u>Misc. 407/36.</u>                                | Division<br><u>Sinse</u> Police Station.   |
| (One form to be used for each person arrested) <u>Oct. 2nd. 19 36.</u> |  |
| Name, age, occupation and address of person arrested.                  | <u>Tsai Bei Kyi (蔡北基), 22, Shanghai, S/Clerk, House 61, Lane 38 Myburgh Road.</u>  |
| Arrested by  | <u>D.S. Konovaloff, C.D.C. 292 &amp; Special Branch Officer and representative of Wosung &amp; Shanghai Garrison Commander's Headquarters.</u> |
| Date and place where arrest took place.                                | <u>2-10-36, House 368, Lane 361 Myburgh Road.</u>  |
| Crime Register No. of  | <u>Execution of Warrant against alleged Communist Assistance to representative of the Wosung</u>   |

- 収録年代: 1894-1945
- 原本: 米国国立公文書館
- ページ数: 92,100以上

# デモンストレーション



# 関連資料のご案内

## ARCHIVES UNBOUND

- 今日ご紹介した以外に、アーカイブズ・アンバウンドにはアジア関係のコレクションが80種類以上あります。
- 詳しくは[こちら](#)をご覧ください。

The screenshot shows the Archives Unbound website interface. At the top, there is a navigation bar with the logo "GALE PRIMARY SOURCES" and "Archives Unbound". Below the navigation bar is a search bar with the text "Search..." and a magnifying glass icon. To the right of the search bar are links for "Advanced Search", "Collections", "About", "Search History", and "Get Link".

The main content area is titled "Explore Collections" and displays "84 collections out of 385". Below this, there is a filter bar with "Applied Filters: Topics : Asian Studies" and a "Clear All" button. To the right of the filter bar are buttons for "Topics", "Document Type", "Language", and "Source Library".

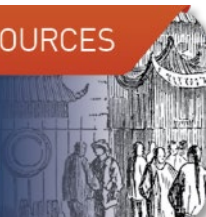
The main content area features a grid of collection cards. Each card has a thumbnail image and a title. The cards shown are:

- Ambassador Graham Martin and the Saigon Embassy's Back Channel Communication Files...
- Cambodia: Records of the U.S. Department of State, 1960-1963
- China: Records of the U.S. Department of State, 1930-1939: Part 1
- China: Records of the U.S. Department of State, 1930-1939: Part 2
- China: Records of the U.S. Department of State, 1940-1944
- China: Records of the U.S. Department of State, 1945-1949
- Chinese Maritime Customs Service Publications
- Chinese Maritime Customs Service: The Customs' Gazette, 1869-1913
- Country Intelligence Reports/State Department's Bureau of Intelligence and...
- Country Intelligence Reports/State Department's Bureau of Intelligence and...
- Country Intelligence Reports/State Department's Bureau of Intelligence and...

# 関連資料のご案内

GALE PRIMARY SOURCES

CHINA AND THE  
MODERN WORLD



## 中国近現代史シリーズ

近現代史における中国と西欧との複雑なかかわりを、世界の著名な所蔵機関からの貴重な資料をもとにたどるシリーズ。

- 近代中国の英語雑誌コレクション1817-1949年
- 中国海関文書集 1854-1949年
- 中国・辺境地域関連 インド・ビルマ省文書 1869-1950年
- 香港関係 英植民地省文書 1841-1951年
- 中国関係イギリス外交文書(FO 17) 第1部 1815-1881年
- 中国関係イギリス外交文書(FO 17) 第2部 1865-1905年

GALE PRIMARY SOURCES

NINETEENTH CENTURY  
COLLECTIONS ONLINE



## 19世紀史料集成(NCCO) 第2部:アジアと西洋世界

米英の在外公館文書・外交文書、宣教師の通信文書や英語定期刊行物、その他の政府文書を通じてアジアの19世紀にせまる50以上の貴重コレクション。

GALE PRIMARY SOURCES

REFUGEES, RELIEF,  
AND RESETTLEMENT



## 第二次世界大戦期 難民・強制移動関係文書集

1930年代から第二次世界大戦を経て1950年代までの約30年間における難民、強制移動に関するイギリスとアメリカの政府文書や非政府機関の文書を収録。



ご清聴ありがとうございました。

無料トライアルのお申込み・お問い合わせは下記まで

[GaleJapan@cengage.com](mailto:GaleJapan@cengage.com)

[www.gale.com/jp](http://www.gale.com/jp)



[twitter.com/gale\\_japan](https://twitter.com/gale_japan)